

NORTH *of* BOSTON

A STORY IN EVERY MILE...

Where to Eat, Stay, Shop & Play

PLUS:

FOUR SEASONS OF FUN

GUIDE TO OUTDOOR ACTIVITIES

ART, HISTORY & CULTURE

LOCAL FARMERS MARKETS

PULL OUT REGIONAL MAP

Massachusetts
massvacation.com

Salem's Most Visited Museum

Witness the web of lies of the Salem Witch Hunts of 1692, one of the most enduring true stories in American History. We are the perfect starting point for your visit to our historic city.

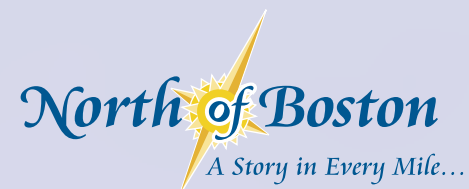
There's no better place to be on Halloween!
Open daily year round



19 1/2 Washington Square North, Salem, Massachusetts 01970

978.744.1692

Translated into Cantonese, French, German, Italian, Japanese, Mandarin, Russian & Spanish.



The North of Boston Convention & Visitors Bureau proudly represents the thirty four cities and towns of Essex County as a tourism destination.

Amesbury, Andover, Beverly, Boxford, Danvers, Essex, Georgetown, Gloucester, Groveland, Hamilton, Haverhill, Ipswich, Lawrence, Lynnfield, Lynn, Manchester, Marblehead, Merrimac, Methuen, Middleton, Nahant, Newbury, Newburyport, North Andover, Peabody, Rockport, Rowley, Salem, Salisbury, Saugus, Swampscott, Topsfield, Wenham, West Newbury

North of Boston CVB
10 State Street, Suite 309,
Newburyport, MA 01950
800-742-5306, 978-225-1559

Cover photo by Dale Blank: Family enters the boardwalk in the dunes and heads to the annual Sand Blast at scenic Crane Beach.

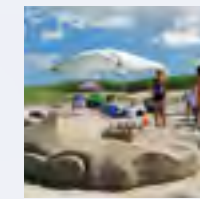
The North of Boston CVB thanks all the photographers who have generously contributed their work to this guide. Graphic design by Judy Robinson-Cox.

The North of Boston Convention & Visitors Bureau, a membership-based organization, publishes this Visitor Guide. The material contained herein is for the use of visitors to the North of Boston region. Every effort was made to ensure the accuracy of the information as of press time, but the North of Boston CVB cannot assume liability for errors or omissions or the damages with may result from reliance on such information. Subject companies provide listings and advertisements. All rates, dates and times are subject to change.

Contents and design © 2011, all rights reserved. Reproduction without written permission is strictly prohibited.

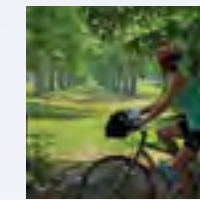
Funded, in part, by The Massachusetts Office of Travel and Tourism

www.northofboston.org
www.escapesnorth.com
[Facebook.com/NorthofBoston](https://www.facebook.com/NorthofBoston)



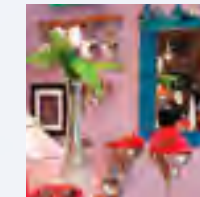
4 FOUR SEASONS OF FUN

No matter the season, the 34 cities and towns of Essex County offer plenty for visitors and locals alike. So when is the best time to come? How about... now!



14 EXPERIENCE THE GREAT OUTDOORS

Discover the splendor of the North of Boston region by land or sea. Find sand-sational beaches and prime paths and parks for outdoor recreation.



15 BEST NORTH SHORE BEACHES

18 GUIDE TO OUTDOOR ACTIVITIES

20 WHERE TO EAT AND SHOP

Essex County is home to some of the best restaurants and shops in the state. Here you'll find unique shops, vibrant downtowns, and signature New England fare.



23 LOCAL FARMERS MARKETS

24 NORTH OF BOSTON EVENTS

There are exhibits, festivals, sports & recreation, concerts, theatrical performances, and special dining events year round. Here are some highlights.



26 ART & HISTORY INTERTWINE

The artistic heritage and natural beauty of the North of Boston region is well known. See for yourself why this place is truly unforgettable.



30 WARM HOSPITALITY

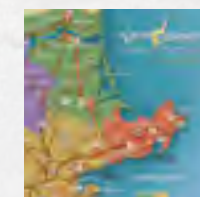
Less than 12 miles from Boston, the region has perfect accommodations for romance, family fun, girlfriend getaways, and special occasions.



35 LIGHTHOUSES NORTH OF BOSTON

37 FUNCTIONS & EVENTS

Host your wedding, conference, family reunion or other special event in the North of Boston region where you'll find welcoming venues of all kinds.



40 MEMBER DIRECTORY

North of Boston CVB members look forward to serving you.

44 THE INSIDER'S GUIDE TO CULTURE NORTH OF BOSTON

Four Seasons of Fun

It's hard to pick a favorite time of year North of Boston. No matter the season, the 34 cities and towns of Essex County offer plenty for visitors and locals alike. In fact, one travel writer described the area as "A New England fantasy – all of the New England's quintessential pieces in one manageable drive." We've gathered some must-dos with some not-so-obvious activities to make your visit memorable. So when is the best time to come? How about... now!

SPRING

Spring brings nature's bounty. Local farms start planting their crops and welcome baby sheep, chicks and other farm animals. Watch a draft horse plow match at *Spencer-Peirce-Little*



Delight in the overflowing flowerboxes in the quaint seaside towns North of Boston.

Farm. Enjoy the longer days and new growth at acres of conservation land and parks North of Boston. Walk the trails at North Andover's Harold Parker State Forest or look for boulders carved with inspirational messages in Gloucester's *Dogtown*. For those with a green thumb, take a garden tour at *Glen Magna Farms* in Danvers or delight in the overflowing flowerboxes in the quaint seaside towns North of Boston.

Celebrate history. In February, honor *Black History Month* by following the

path of the Underground Railroad through Essex County and learn about William Lloyd Garrison, Frederick Douglass, and the abolitionist movement. Then celebrate *Women's History Month* in March with a performance of one-woman shows at the *Actors Studio of Newburyport* or learn about two women iconoclasts from Lynn, MA – Lydia Pinkham, a concocter and shrewd marketer of a commercially successful women's tonic in 1875, and Mary Baker Eddy, founder of the Christian Science movement.

Read the book and see the movie. The *Newburyport Literary Festival* in April draws avid readers and authors in all genres to the historic seaside city. In February, the *Salem Film Fest* mounts its annual festival with films and filmmakers from all over the world. Hollywood has also discovered the North of Boston region, selecting to shoot many movies here including *Bride Wars*, *The Women*, *The Proposal*, *Hickory Nation*, *Grown Ups*, *The Witches of Eastwick*, and *The Perfect Storm*.



Enjoy the beauty of Spring at Sedgwick Gardens at Long Hill in Beverly.

Marion Bayly

continued on page 8

Explore it all! Salisbury



CHAMBER OF COMMERCE
From the Beach to the Village Square

Year Round Fun for the Whole Family!

- The Newest Games
- Pinball & Videos
- Skee-ball
- Prizes
- Snack Bar



Visit us at our two Salisbury Beach locations!

15 Broadway and 10 Broadway
Salisbury, Massachusetts
978-465-8311 • joesplayland.com

FUN PLACES TO GO

Cinemagic
6 Merrill Street, Rt. 110
(978)499-9494
cinemagicmovies.com

Joe's Playland
15 & 10 Broadway
(978)465-8311
joesplayland.com

RESTAURANTS

Marie's Restaurant
85 Beach Road
(978)462-0911
facebook.com/MariesRestaurant
maries_restaurant@yahoo.com

CANDY & CHOCOLATE
New England Chocolate Company
123 Lafayette Road
(978) 465-9295
newenglandchocolatecompany.com

LODGING

Hilton's Dunes Motel
162 Beach Road
(978) 465-2644

CAMPGROUNDS

Salisbury Beach State Reservation
Off Beach Road, Rt. 1A
(978)462-4481
(877)422-6762

GOLF & COUNTRY CLUB

Amesbury Golf & Country Club
4 Country Club Road, Amesbury
Call the Pro Shop to book your tee time! (978) 388-5153
amesburygolf.com

RENTALS & SALES

Foote Rentals
Ed Foote
(978)462-9709

Tom Saab Real Estate

Seacoast Office
190 North End Blvd., Rt. 1A
(978)465-5116
tomsaabrealestate.com

PROPANE SALES

Harbor Garden Center
53 Bridge Road
(978) 462-8200
harborgardencenters.com



7ycorp Entertainment's
CINEMAGIC
STADIUM THEATERS



DIGITAL SOUND!
THEATER RENTALS!
STADIUM SEATING!
ONLINE TICKETING!

6 MERRILL STREET
SALISBURY, MA 01952
TEL: 978.499.9494

WWW.CINEMAGICMOVIES.COM

(978)465-3581 • **SalisburyChamber.com**

Massachusetts



Ipswich

Something for everyone

For more Ipswich information call (978)356-8540 • www.ipswichma.com

View inspiring collections in our museums and beautifully preserved first-period homes. Swim and stroll along 4.5 miles of pristine dune-lined beach and enjoy the spectacular natural beauty of wildlife sanctuaries. Explore art galleries, great shopping and fine dining where you'll taste the freshest seafood anywhere. Visit Ipswich. You'll find something for everyone.

Shuttle bus available on summer weekends. www.ipswichessexplorer.com
Special thanks to photographer Lee Nelson.



The spectacular salt marshes in Ipswich have been the subject of countless paintings and photographs for centuries.

Borsari Gallery

THE CRANE ESTATE




290 Argilla Road
Ipswich, MA
tel 978.412.2555
www.craneestate.org



Foote Brothers Canoe Rentals
at Willowdale Dam on the Ipswich River

230 Topsfield Road, Ipswich, MA 01938
(978) 356-9771
www.footebrotherscanoes.com
"Inexpensive fun for the whole family for over 50 years"



Clam Box of Ipswich, Inc.
Since 1935, serving generations of families the finest fried seafood and the famous Ipswich fried clam.

246 High Street, Route 1A, Ipswich, MA
(978) 356-9707



Ipswich Visitor Center
Open weekends in May. Open seven days a week from Memorial Day until October 15, 9am-5pm, Monday through Saturday and Sunday noon-5pm. Parking, restroom and audio tour available. Our staff will provide local and regional information, maps, brochures and museum tickets. Ipswich audio walking tours available. Art exhibits on location by local artisans.

36 South Main Street, Rte 1A, Ipswich, MA (978) 356-8540



IPSWICH MUSEUM

1677 Whipple House
National Historic Landmark with period furnishings and authentic Housewife's Garden.

1800 Heard House
High style architecture, China Trade artifacts and 19th century artwork by Arthur Wesley Dow.

Open for tours May-October, Wednesday-Sunday. Special hours in winter and fall, please call ahead.

54 South Main Street, Ipswich, MA 01938
(978) 356-2811 www.ipswichmuseum.org




8 Hayward Street, Ipswich, MA 01950
(978) 356-6941
toll free 888-711-3060
fax 978-356-8842
fishmarket@ipswichshellfish.com
www.ipswichfishmarket.com
Hours of Operation
Tuesday – Saturday 10:00 AM – 6:00 PM
Closed Sunday and Monday



Ipswich Inn

Open for breakfast daily. Eight guest rooms. Events room for up to 99 people. Located near Ipswich Center. Grand opening 1988.

2 East Street, Ipswich, MA 01938
978-356-2111
www.ipswichinn.com • info@ipswichinn.com



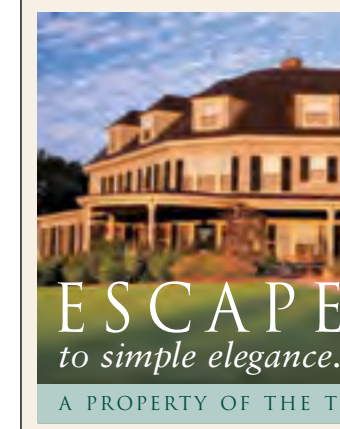
ITHAKI
MEDITERRANEAN CUISINE

An Authentic Experience in Greek Fine Dining

25 HAMMATT ST. · IPSWICH · MA 01938
978 356 0099 · ITHAKICUISINE.COM



Arbor Inn Motel
153 High St. - Rt. 1A, Ipswich, MA 01938
978-356-0220
reserve@arborinnmotel.com
www.arborinnmotel.com



THE INN AT CASTLE HILL
ON THE CRANE ESTATE

Uniquely appointed guest rooms
Spectacular setting & stunning ocean views

IPSWICH, MA
RESERVATIONS 978.412.2555
WWW.THEINNATCASTLEHILL.COM

A PROPERTY OF THE TRUSTEES OF RESERVATIONS



RUSSELL ORCHARDS FARM & WINERY

143 Argilla Road
Ipswich, MA
978-356-5366

Fine Fruit Wines
Scratch Bakery
Fruit Orchards
Berry Fields

Local foods & gifts
Open daily
May-Nov.

russellorchards.com
Visit a working Family Farm!



Summer means sun, sand, and saltwater such as these sun bathers building a Batmobile sand castle on Crane's Beach, Ipswich.

FOUR SEASONS OF FUN

continued from page 3

SUMMER

Beaches, baseball, bikes, boating – the North of Boston sizzles in summer. From Salisbury Beach's amusements, free concerts, and fireworks to the annual sand castle contest at Crane's Beach in Ipswich there is something for everyone. For a complete list of the region's beaches, see page 15. Or, take your team to the Essex Baseball Club's ol' ball game, which abides by 1861 rules for a vintage version of American's favorite pastime. Games take place in Newbury, Danvers, and Lynn.

If two wheels are your passion, there are many group rides available that take you past beautiful North Shore scenery, while serious contenders can sign up for the Gran Prix of Gloucester/ECV Cyclocross Race or the Witches Cup, an elite caliber bicycle race in Salem. Old rail trails make great bike routes. Don't miss the scenic Border to Boston Trail.

Watch all kinds of wooden boats being made in Amesbury, Essex and Gloucester, where shipbuilding has been a tradition for centuries. Board a sailing schooner, hoist a sail and learn about navigation. From tall ships to dories, these beautiful watercrafts are bound to buoy your spirits. Sailing charters can take you out for the day or an overnight trip. For a shorter ride, try one of the many harbor or river cruises. Whale watching and fishing excursions out of Gloucester and Newburyport depart daily. Or, rent a kayak to explore on your own.

continued on page 11



The tradition of Essex Boat building, created over the past two hundred years is carried on at the Burnham Boatyard in Essex.

Play. Eat. Shop. Relax.

The Pavilion on Salisbury Beach

Dining Savor fresh seafood and steaks overlooking the ocean or authentic Italian cuisine in a cozy family trattoria.	Nightlife Join the nightly party on a giant surfside deck with hot live music and cool tropical drinks.	Music See top national musicians perform in an intimate concert venue.	Recreation Try the hottest new water sport, stand-up paddleboarding. Fun for the whole family!	Shopping Find a unique selection of gifts, jewelry, kid and home treasures.
--	---	--	--	---

the Pavilion
www.NorthShorePavilion.com • 978.465.2000

Seaglass RESTAURANT • LOUNGE
Capri BEACHSIDE ITALIAN GRILLE & BAR
BLUE OCEAN WATERFRONT
Surf 5 Side Beach Bar & Grille
By the Sea UNIQUE GIFTS

NEWBURYPORT

shop	dine	explore	relax
------	------	---------	-------

Rich History, Undeniable Charm.
shops • inns • restaurants • galleries
harbor • beaches • nature • and more

www.NewburyportChamber.org • 978-462-6680



DS Designs Accessories for People & Places
 158 Washington Street • 781.639.2336
 DS Designs has a thousand ways to enhance both your personal style and your physical space – jewelry, handbags, scarves, table linens, ceramics, candles and much more. We specialize in Great Designs at Great Prices! DSDesigns.com



Hestia Creations
 13 Hawkes Street • 781.639.2727
 Handcrafted New England-inspired gift items, all designed by our talented studio artists. Come browse our selection of ceramics, ornaments, note cards, paperweights, unique jewelry, and more. Parking! HestiaCreations.com



Marblehead Cafe & Chowder Co.
 9 Bessom Street • 781.631.6300
 Creative comfort food and handcrafted soups and chowders. Full Breakfast seven days a week. Daily Specials. Stop in and sample any of our soups and chowders. We can also cater your business or personal events.



Moran Studios
 50 Atlantic Avenue • 781.631.4399
 The finest elegant & sophisticated invitations, stationery & paper. A Crane's Model Store featuring Kate Spade and many fine companies. Circle Moran creates pen & ink portraits, in-house imprints and hand calligraphy. rsvp.MoranStudios.com



Shipshape
 128 Washington Street • 781.631.7477
 Tucked in an 18th century house in Old Town Marblehead, Shipshape brims with a bounty of distinctive glass and tableware and delights shoppers with nautically inspired gifts handcrafted by local and regional artisans. ShipshapeMarblehead.com



Shubies
 16 Atlantic Avenue • 781.631.0149
 From fine wines to meticulously prepared foods, Shubie's is built on passion and pride. Stop in-sample savory cheeses. Enjoy a sandwich in our cafe. Stay a while! shubies.com



The Garden Collection
 155 Washington Street • 781.631.8652
 The Garden Collection has unique gifts from all over the world, for your home, for a friend or for yourself...pottery, Santons, handbags, hooked rugs, baby gifts and so much more.



The Landing Restaurant
 81 Front Street • 781.639.1266
 The Landing Restaurant on the harbor at the State Street Landing. Casual Pub fare, classic dining room entrees and a fabulous heated deck overhanging the harbor. Serving 7 days from 11:30 AM. TheLandingRestaurant.com



"Went to Marblehead. It was 4 miles out of the way, but I wanted to see it." - George Washington

**Go out of your way too,
 Just as George once did!**

**Discover history at every corner. Shop,
 Dine, Stroll & Relax. You'll be glad you did!**

VisitMarblehead.com



Harbor Light Inn
 58 Washington Street • 781.631.2186
 Marblehead's 4-star Inn located in the heart of the historic district. A/C, fireplaces, double Jacuzzis, conference/function room, cozy tavern, family suites & extended stay available. Welcome to one of the country's "10 Most Romantic Inns." (Vacations Magazine). Meetings, weddings, private functions welcome. HarborLightInn.com

FALL

Labor Day is a perfect time to explore Lawrence and hear the tales of the Bread & Roses strike and the Industrial Revolution. Living history abounds here — see how iron was forged at the Saugus Ironworks National Historic Site, or how shoes were manufactured during the turn of the century at Lynn Heritage State Park.

View the changing hues of the fall foliage on scenic driving routes that wind through the region and offer winding hills or ocean and marsh vistas. Search for antiques and stop by a road-side stand to get the freshest local produce.

Speaking of harvest time, get ready for hayrides and harvest celebrations. Family-run farms offer seasonal vegetables, apple picking, corn mazes, cider-pressing, and something special for young and old alike. Enjoy fine-crafted wine at Russell Orchards, local brews at Cape Ann Brewing Co., and top shelf liquor at Ryan & Wood Distilleries.

Help pick grapes then enjoy some wine at a local vineyard. Home-cooked pies and cider donuts round out the true New England experience at family-run farms.

Enjoy old-fashioned fun at the Topsfield Fair, the oldest county fair in the nation, with animals, farming demonstrations, games, rides, ongoing entertainment, and some of the biggest pumpkins you've ever seen.

Once the center of America's Witch Hysteria of 1692, Salem is now the ultimate Halloween destination. Today, practicing witches make up 10% of Salem's population. Each October, the

continued on page 13



Fall in Essex County is full of picture-perfect destinations for leaf peepers, photographers and nature lovers, such as this nature trail at the Parker River National Wildlife Refuge in Newburyport.



DISCOVER Gloucester

THE ISLAND YOU CAN DRIVE TO

Wild Whales & Spectacular Sails, Beaches,
Ocean Fresh Seafood, Rooms with a View
...and so much more

Free visitor guide at
DiscoverGloucester.com



7 Seas Whale Watch

Seven Seas Wharf
Rogers Street
888-283-1776
7Seas-WhaleWatch.com

Whale sightings guaranteed at the most recommended whale watch company in Gloucester. Naturalist guided.



The Schooner Thomas E. Lannon

Seven Seas Wharf
Rogers Street
978-281-6634
Schooner.org

Daily harbor sails on a beautiful 65' wooden schooner. Lobsterbakes, music sails, charters. FUN!



Gloucester House Restaurant

Seven Seas Wharf
Rogers Street
978-283-1812
TheGloucesterHouse.com

Full-service or eat in the rough World-renowned lobsterbakes and local seafood specialties, weddings & functions.



Harbor Tours, Inc

Harbor Loop
978-283-1979
CapeAnnHarborTours.com

Narrated lobstering tours of historic Gloucester Harbor and round the cape Lighthouse Cruises. NEW! Self-guided walking tours of Gloucester's Harborwalk.

GloucesterHotels.org

Cape Ann's
Marina Resort
800-626-7660

Vista Motel
866-847-8262

HarborView Inn
800-299-6696

Sea Lion Motel
& Cottages
978-283-7300

Cape Ann Motor Inn
800-464-8439

for more information about any of these fine hotels, visit
GloucesterHotels.org



River Cruises Spa Services

75 Essex Avenue
978-283-2116 800-626-7660
CapeAnnMarina.com

On the water, newly renovated rooms, free Wi-Fi; weddings, spa, indoor pool. Open year round, groups welcome. Free river cruise*, continental breakfast*, Internet specials, Waterfront Bar & cafe. (*seasonal).

FOUR SEASONS OF FUN

continued from page 11

city throws a month-long Haunted Happenings celebration attracting people from all over the world. Halloween in the Wiccan religion is the equivalent of New Year's Eve with memorable, spirited events.

WINTER

Discover what locals already know: North of Boston sparkles in the snow. Cut fresh tracks on cross-country trails, find hills for sledding and ponds for skating. Holiday lights twinkle in small villages, and historic homes are specially decorated for seasonal events and tours. Many towns host special retail weekends for holiday shopping, with Santa's arriving by lobster boat to join the celebrations. Fireside dining options with a view of the ocean abound. Cozy Inns, B&B offer great getaway packages and spa promotions, check northofboston.org for more information.

A few of our favorite off-season events include: Ice sculptures and chocolate combine at Salem's So Sweet Celebration in February. For those who think cold weather is for the birds, they're right! Grab your binoculars and camera to catch the more than 300 species of birds that live here and migrate through the region, including piping plovers, herons, white-tailed hawks, and even bald eagles. The Parker River National Wildlife Refuge and the Plum Island Estuary is one of the country's most productive, year-round, wildlife viewing areas. Don't miss the annual Eagle Festival at the Joppa Flats Education Center in Newburyport or Cape Ann's Winter Birding Weekend.



Dozens of cross country ski trails wind through Essex County in Winter. See page 16 for a list of some of the most popular ski trails and other outdoor activities.

Travelogue Contest

The North of Boston region has a story in every mile. You will see these travelogue stories throughout this guide and on our website. We hope you will be inspired to share your own travelogue and enter our contest.

First Step—Book your vacation or getaway North of Boston!

Explore secret staircases. Sail on a schooner. Eat lobster in the rough. Lose yourself in a museum. Go for a bike ride along the coast. See whales so close you can almost touch them. Learn about the witch trials of the 1600s. Bask in the sun on a singing beach. Come discover what makes the 34 cities and towns of Essex County so unique. Then, tell us about it!

Northofboston.org features user-submitted Travelogues – stories about memorable experiences from residents and travelers from far and wide.

If you have a story or photo/video you'd like to share, send it to travelogues@northofboston.org for a chance to be featured on the website, and win a prize!

Follow us on Facebook to stay up to date on events and activities North of Boston!

Experience the Great Outdoors

Discover the splendor of the North of Boston region by land or sea. The area is home to some of the most spectacular whale watching on the East Coast of New England. Enjoy a paddle along the estuaries and rivers of Essex County or cycle our many trails. National and state parks, preservation land and community commons offer ample chances to hike, bird watch, and soak up nature. Swim, surf and sunbathe at our many beaches. In winter cross-country ski, sled and go ice-skating on a pond. Outdoor festivals take place throughout the year, providing four seasons of fun.



Travelogue

“This is as good as going to Nantucket and much less hassle. Those were my husband Tom’s words as we pedaled our bicycle-built-for-two along the back roads of Gloucester and Rockport last summer. Since I hadn’t been exercising much, I thought that taking a bike ride around Cape Ann would be a fun thing to do. Tom agreed, so we spent the day pedaling our way around the island.

At Cape Ann’s northernmost point, we turned into Halibut Point State Park. A path leads to an old granite quarry with cliffs and a fabulous view of the ocean beyond. A wonderful spot to picnic, relax and enjoy the ocean.”

KE, Gloucester, MA

A Cape Ann Whale Watch

**P.O. Box 345, 415 Main Street,
Rose Wharf, Gloucester, MA 01930
800-877-5110 / 978-283-5110
www.seethewhales.com**

North of Boston’s first and most experienced whale watch since 1979. Celebrating our 33rd season of whale watching. Sail aboard the “Hurricane!” the largest and fastest whale watch vessel in Massachusetts, North of Boston. Research oriented trips. Sightings guaranteed. Naturalists from the Whale Conservation Institute. Sailing Daily. May to October.

Capt. Bill & Sons Whale Watch

**24 Harbor Loop, Gloucester, MA 01930
800-33-WHALE / 978-283-6995
www.captbillandsons.com**

Family-owned and operated since 1959. New England’s first & most experienced whale watch. Vessels built for speed and comfort. Guaranteed sightings! Research scientists narrate all trips. Free Parking & Whale Exhibit on site. Online Reservations Available.

Salem Ferry – Boston’s Best Cruises

**10 Blaney Street, Salem, MA 01970
617-770-0040
www.bostonsbestcruises.com**

Relax and enjoy the tour of Boston and Salem Harbors, then arrive in downtown Boston or

Salem in comfort and style in less than an hour! Ask us how to use your ticket to save on admissions, dining, and shopping in BOTH ports of class. More than just a boat ride!

Salisbury-by-the-Sea Chamber of Commerce

**P.O. Box 1000, Salisbury, MA 01952
978-465-3581
www.salisburychamber.com**

Sandy beaches, summer festivals, boating, fishing and leisure recreational activities await you in Salisbury. Enjoy our seaside fare, walk along the water’s edge or build a fabulous sand castle. We invite you to come experience, explore and discover Salisbury.

Topsfield Fair

**Route 1, Topsfield, MA 01983
978-887-5000
www.topsfieldfair.org**

193rd annual Topsfield Fair, Sept. 30 to Oct. 10, 2011; Senior Citizens Day, Oct. 3; Open daily, 10am-10pm. Discounted advance sale admission and ride tickets available; children under 8 FREE with an adult; MC/ Visa/Amex/Discover accepted; ATM machines on premises; free grandstand shows and entertainment; agricultural exhibits and program; midway.

Best North Shore Beaches

The North Shore beaches are as beautiful as anywhere in the world, with tidal pools, quiet lakes, rocky coasts, secluded sun-bathing spots, and plenty of surf.

Local Favorites (Get there early!)

- ∴ Crane Beach, Argilla Rd., Ipswich
- ∴ Good Harbor Beach, Thatcher Rd., Gloucester
- ∴ Plum Island, Plum Island Tpke., Newburyport
- ∴ Preston Beach, Atlantic Ave., Marblehead/Swampscott
- ∴ Singing Beach, off Route 127, Manchester by the Sea
- ∴ Wingersheek Beach, Atlantic St., Gloucester

Great Beaches for Families

- ∴ Dane Street Beach, Lothrop St., off Route 127, Beverly
- ∴ Lynch Park, Ober St., off Route 127, Beverly
- ∴ Pearce Lake, Breakheart Reservation, Forest St., Saugus
- ∴ Salisbury Beach, off Route 1A, Salisbury
- ∴ Stage Fort Park, Cressey’s & Half Moon Beaches, Routes 133 & 127, Gloucester

And Don’t Miss these Beauties...

- ∴ Devereux Beach, Ocean Ave., Marblehead
- ∴ Front and Back Beaches, Main St., Rockport
- ∴ Long Beach, Route 127A Gloucester/Rockport
- ∴ Lynn Beach, Lynn Shore Drive, Lynn
- ∴ Nahant Beach, Route 1A, Nahant
- ∴ Niles Beach, Eastern Point Rd., Gloucester
- ∴ Old Garden Beach, Old Garden Rd., Rockport
- ∴ Pavilion Beach, Stacy Blvd., Gloucester
- ∴ Salem Willows Park and Winter Island, Salem



Salisbury Beach

See page 38 for more listings

Guaranteed Sightings!

Rated #1 Attraction in Gloucester on **TripAdvisor.com** (third year in a row!)

7 Seas Whale Watch

1-888-283-1776 www.7SeasWhaleWatch.com

THE salem ferry Why should you take the ferry between Salem & Boston?

Discover Boston & Salem Harbors with our tour, and see five lighthouses!

Our onboard Concierge helps You plan your day

You Save 10% or more at over 50 attractions & restaurants with **Cruise & Play**

No traffic hassles—arrive safe & sound in less than an hour!

New lower price! You will love the trip & the value

Docks in the heart of downtown Salem & Boston. Walk to everything!

More than just a boat ride!

saalemferry.com
617.770.0040

visit our website www.captbillandsons.com where you can book reservations online and view the latest postings on Capt.'s Blog.

Join Us For An Experience You Will Never Forget!

CAPT. BILL & SONS WHALE WATCH

CELEBRATING OVER 50 YEARS

Family owned and operated! Our naturalists, from The Whale Center of New England, are among the top scientists and guides in the field. Learn about the biology and conservation of whales and other marine mammals.

See you on our next trip!

1(800)339-4253

PRESENT THIS AD AND RECEIVE **\$5.00 OFF Each Adult Ticket**

Exclusive On Site Whale Museum & Public Education Center

24 Harbor Loop, Gloucester, MA 01930
www.captbillandsons.com

SIGHTINGS GUARANTEED!

Photos from top to bottom: CG certified vessel custom designed for whale watching. Since 1959, whales have greeted us on 99% of our trips. View a 28 foot humpback skeleton at the free exhibit.

Your Guide to Outdoor Activities



	Hiking	Biking	Picnicking	Fishing	Bird Watching	Horseback Riding	Cross Country Skiing	Snowmobiling	Boating	Kayaking	Swimming
GREATER NEWBURYPORT											
Amesbury Riverwalk, Amesbury	●	●					●				
Appleton Farms & Grass Ride, Ipswich	●		●		●	●	●				
Bradley Palmer State Park, Topsfield	●	●			●		●				
Castle Hill on the Crane Estate, Ipswich	●	●	●		●		●				
Choate Island/ Crane Wildlife Refuge, Essex	●		●	●	●				●	●	
Clipper City Rail Trail & Harborwalk, Newburyport	●	●					●				
Eastern Marsh Trail, Salisbury	●	●									
Hamlin Reservation, Ipswich	●	●	●		●		●				
Maudslay State Park, Newburyport	●	●	●		●	●	●				
Old Eastern Marsh Trail, Salisbury	●	●		●	●		●				
Old Town Hill, Newbury	●		●	●	●		●			●	
Parker River National Wildlife Refuge, Plum Island	●				●						
Salisbury Beach Reservation, Salisbury	●	●		●							
Sandy Point State Reservation, Ipswich	●			●	●		●				
Willowdale State Forest, Ipswich	●	●									
CAPE ANN											
Agassiz Rock, Manchester-by-the-Sea	●		●		●		●				
Coolidge Reservation, Manchester-by-the-Sea	●		●	●	●		●				
Dogtown Common, Gloucester/Rockport	●	●			●						
Essex County Greenbelt/Cox Reservation, Essex	●				●						
Halibut Point State Park, Rockport	●			●			●				
Mount Ann Park, Gloucester	●		●				●				
Ravenswood Park, Gloucester	●	●	●		●		●				
Stage Fort Park, Gloucester	●	●	●		●		●				●
Starvos Reservation, Essex	●		●		●		●				
GREATER SALEM											
Crowninshield Island, Marblehead	●		●	●	●					●	●
Long Hill, Beverly	●		●		●		●				
Lynn Woods, Lynn									●	●	
Misery Island, Salem	●		●	●	●				●	●	●
Salem-Marblehead Rail Trail	●	●					●				
Salem Willows Park, Salem				●						●	●
MERRIMACK VALLEY											
Georgetown-Rowley State Forest, Georgetown	●	●					●	●			
Harold Parker State Forest, North Andover	●	●		●		●				●	
Lawrence Heritage State Park, Lawrence	●	●	●	●							
The Stevens-Coolidge Place, North Andover	●		●		●		●				
Ward Reservation, North Andover	●	●	●			●	●				
Weir Hill, North Andover	●	●	●		●	●	●				

photo: Hikers explore Appleton Farms in Ipswich

Watch Whales!

OUR 33rd SEASON!

Aboard The Hurricane II
The Fastest, Largest Whale Watch
Boat North of Boston!

The *Hurricane II* gets you to the whale grounds faster and in more comfort. Spend less time travelling back and forth and more time watching whales.

- **Guaranteed Sightings!**
- **100% Humpback Sighting Record in 2009!**
- **3 to 4 hour trips!**



H. Hughes



The Hurricane II

We are the pioneers of whale watching in Gloucester, since 1979. We are also the only whale watch associated with the Whale Conservation Institute, led by Dr. Roger Payne, father of whale research and host of "In the Company of Whales."

Cape Ann Whale Watch



Rose's Wharf, 415 Main St., Gloucester, MA

Call Toll Free: 1-800-877-5110

Discover More and Reserve Tickets Online at:
www.SeeTheWhales.com

Where to Eat & Shop

A hot bed of culture, Essex County is also home to some of the best restaurants and shops in the state. From tiny antique shops and artisans' studios to vibrant downtowns and bustling malls, the region is a shopaholic's dream. If a culinary experience is what you seek, the dining opportunities range from traditional New England fare to chef's signature dishes created from the freshest seafood and seasonal produce. Sample delectable local wines, beers and spirits as well as handcrafted sweets. The North of Boston region is bursting with flavor, so dive in!

CAPT's Waterfront Grill & Pub
Pickering Wharf, Salem, MA 01970
978-741-0555, www.capt.com

Waterfront dining at its best! Outstanding charcoal grilled seafood, steaks & burgers plus traditional and contemporary New England fare. A fantastic combination: great food, service, ambiance – all at wicked good prices.

Finz Seafood & Grill
76 Wharf Street, Picking Wharf
Salem, MA 01970
978-744-0000, www.hipfinz.com

Finz features:

- The freshest "new" New England seafood
- Waterfront dining indoors and out
- Lively fireside lounge with leather couches
- Elegant private room, lofted ceiling and harbor views for groups of 30-125



Travelogue

"Most people know of Woodmans for their famous fried clams, steamers, chowder, and overflowing beers—the quintessential ending to a day on the beach. As I have watched the restaurant line grow longer and longer over the years, I have noticed a trend in the smiling faces anxiously anticipating the taste of the familiar meal to their palates. In fact, the meal is so familiar that often guests will visit ... several times a week. While you might think that the food alone is good enough to attract such a large crowd, I propose that there is another side of Woodmans that brings people back every year. For me, going to work at Woodmans was like going home.

Yes the food is good, but it is the other side of Woodmans that makes the experience extraordinary. In fact, I believe that people come to Woodmans every year because they too feel as if they are coming home, and they stand in the long line for the love, care, and consistency that exists behind each and every fried clam. After all, Home is not a place, it's people"

RB

Newburyport Development
54 Inn Street, Newburyport, MA 01950
978-465-8571

www.newburyportdevelopment.com

Newburyport Development owns more than 50 prime retail/office locations and residential units throughout downtown Newburyport and operates commercial properties including the Newburyport Marinas, Newburyport Whale Watch, Michael's Harborside and Ten Center restaurants, Harborside Catering and the Phoenix Room.

Woodman's of Essex
121 Main St. (Rte. 133), Essex, MA 01929
800-649-1773

www.woodmans.com

Over 95 years of award-winning seafood, tradition, and memories! "Best Seafood in America", Forbes FYI; "Best Local Food in Massachusetts", Yankee Magazine; "Best Steamers", Boston Magazine; "Best of Boston", Boston Phoenix; Fried Clams, Seafood, Lobsters, Chowder, Onion Rings, Full Bar, Raw Bar (seasonal) and more! An "Eat in the Rough" family-friendly restaurant where you can "Dig in and Get Messy!" Check out our New Restaurant in Litchfield, NH. Open Seasonally.

See page 38 for more listings.



YOU'VE ARRIVED



AND SO HAS YOUR LUNCH

It doesn't get any better or fresher than Summer & Seafood on our Deck



FREE Appetizer!
TEXT "LATCVB" to 72727
 to get an instant coupon.



DESTINATION FOUND

25 Rogers Street
 Gloucester, MA
 978-281-0223

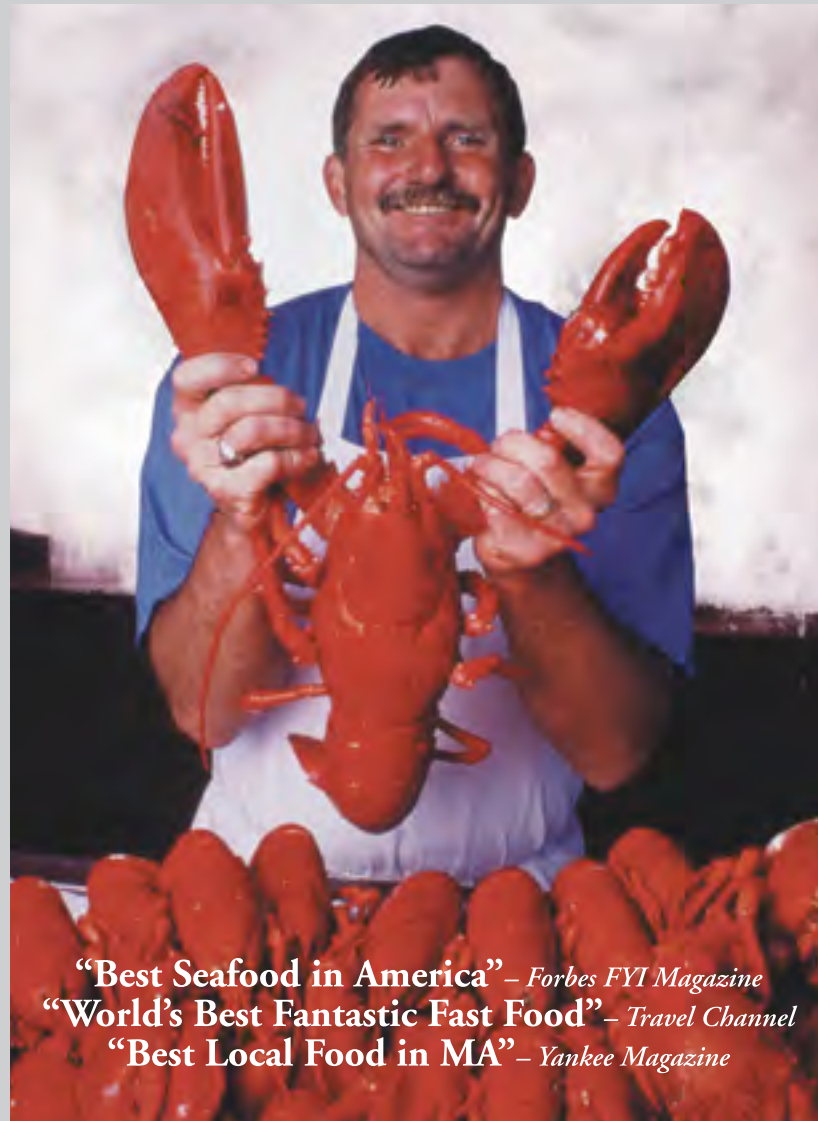
LatFortyThree.com

ENJOY SEAFOOD AT ITS BEST

CLAMS LOBSTERS SHRIMP SCALLOPS CHOWDER & MORE

Go ahead Dig in and get Messy!

“An American Cult Classic right up there with baseball and apple pie.” – *Zagat Restaurant Guide*



“Best Seafood in America” – *Forbes FYI Magazine*
 “World’s Best Fantastic Fast Food” – *Travel Channel*
 “Best Local Food in MA” – *Yankee Magazine*

As any seafood lover will tell you, there’s no better place to enjoy traditional Yankee fare than at Woodman’s of Essex, where over 95 years ago the fried clam was invented! The Woodman family, now in its fifth generation, still serves up hearty portions of award-winning seafood to generations of loyal customers. The informal setting of this once road-side stand adds to the delight of enjoying New England seafood at its best. So go ahead, dig in and get messy! Woodman’s is the ideal spot for a tradition of eating great food, making memories, and having fun!



woodmans.com



WOODMAN'S®

☆ OF ESSEX ☆

A Yankee Tradition Since 1914

121 Main Street, Essex ★ woodmans.com ★ 800-649-1773

Local Farmer’s Markets

Andover, June-October

97 Main Street
Saturdays, 12:30-3:30pm

Beverly, June-October

Veteran’s Park
Mondays, 3:30-6:45pm

Georgetown, July-September

Georgetown Crossing
Saturdays, 9:30am-1pm

Gloucester, July-October

Stage Fort Park
Thursdays, 3-6:30pm

Haverhill, July-October

80 Main Street
Saturdays, 8am-1pm

Ipswich, July-October

EBSCO Parking Lot
Saturdays, 9am-noon

Lawrence, July-October

Appleton Way
Wednesday, 9am-4pm



Saul Schorr

Newburyport, June-October

Tannery Marketplace
Sundays, 9am-1pm

Peabody, July-October

Behind Essex County Courthouse
Tuesdays, 1-6pm

Rowley, July-September

Town Common
Sundays, 8am-1pm

Salem, June-October

Derby Square
Thursdays, 3-7pm

Saugus, July-October

Cliftondale Square
Tuesdays, 10am-3pm

Topsfield, July-September

Topsfield Fairgrounds
Saturdays, 7am-noon

West Newbury, July-October

Grange Hall
Saturdays, 9am-noon

Lynn, July-October

Central Square
Thursdays, 11am-3pm

Marblehead, June-October

Veteran’s Middle School
Saturdays, 9am-noon



SALT MARSH ANTIQUES



Where Country Hospitality Comes First

Antiques and unique gift-giving treasures, in our period restored 1805 barn. 6,000 square feet of shopping space. Period, Country, Shaker, Victorian, Empire & Custom Furniture. Primitives, Pottery, Porcelain, China, Glass, Sterling Silver, Pewter, Paintings, Prints, Quilts, Textiles, Jewelry, Lighting, Clocks, Rugs, Dolls, Toys, Tools, Books & more...

Open Daily & Year-Round • Purchasing Single Items or Whole Estates • Free Appraisals!

“ON SCENIC ROUTE 1A” • 224 MAIN STREET, ROWLEY, MASSACHUSETTS
 TEL. (978) 948-7139 • WWW.SALTMARSHANTIQUES.COM • AMPLE PARKING



North of Boston Events

Spring 2011

- April 29-30 : Newburyport Literary Festival
- April 29-May 1 : Marblehead Art Walk
- May 1: Gloucester Pride Stride
- May 1: Daffodil Day, Beverly
- May 1: KidsFEST, Haverill
- May 6 & 13 : Spring Invitation Nights, Newburyport
- May 14 : Essex River Race
- May 21 : Motif #1 Days, Rockport
- May 21 : Artist's Plein Air Day, Essex
- May 29- 30 : Spring Fest, Newburyport
- June 3-5 : Salem Arts Festival
- June 10-12 : Art in the Barn, Essex
- June 9-17 : Rockport Chamber Music Festival
- June 16-19 : Semana Hispana, Lawrence
- June 18 : Essex River Day
- June 18-19 : Cape Ann Artisan's Studio Tour



The crowd enjoys the music at a street festival in Lynn.



Schooners Alabama, Roseway and the Thomas E. Lanon compete in Gloucester's Schooner Festival race.

Tom Robinson-Cox



Gloucester's St. Peter's Fiesta, a five day festival honoring the patron saint of the fisherman St. Peter, features outdoor entertainment, midway, blessing of the fleet, Greasy Pole, Seine Boat races, and fireworks

Summer 2011

- June 25-26 : Sand & Sea Festival, Salisbury
- June 22-26 : St. Peter's Fiesta, Gloucester
- July 29-31 : Olde Ipswich Days, Ipswich
- July 23 : Salem CultureFest
- July 1-4 : Marblehead Festival of Arts
- July 3-4 : Independence Day Celebrations, Essex County
- July 5-21 : Boston Lobster's World Team Tennis, Danvers
- July 28-30 : Gloucester Sidewalk Days
- July 23 : Manchester Arts Festival
- July 31-August 7 : Yankee Homecoming, Newburyport
- August 5-7 : Salem Maritime Festival
- August 4-6 : Old Fashioned Sidewalk Days, Newburyport
- August 7 : Gloucester Fisherman Triathlon
- August 6-14 : Salem Heritage Days
- August 14 : Rockport Acoustic Music Festival
- August 20-21 : Gloucester Waterfront Festival
- August 20-21 : Salem Jazz and Soul Festival
- August 27 : Essex Music Festival
- September 2-4 : Gloucester Schooner Festival
- September 3-5 : New England Arts and Crafts Festival, Topsfield
- September 5 : Bread and Roses Festival, Lawrence
- September 10-11 : Swampscott Arts & Craft Festival

CAREFULLY REMOVE REGIONAL DRIVING MAP

CAREFULLY REMOVE REGIONAL DRIVING MAP



The Topsfield Fair, America's oldest agricultural fair, will hold this year's fair from September 30 - October 10, 2011.

courtesy Topsfield Fair



Salem's Haunted Happenings is a month-long series of events for the whole family culminating in a city-wide Halloween blast on Oct. 31.

courtesy Salem Main Streets

- November 17-Dec 3 : Festival of Trees, Methuen
- November 27 : Santa Parade & Tree Lighting, Newburyport
- Nov. 27-Dec. 25 : Cape Ann Holiday Festivities
- December 1-3 : Essex Holiday Festival
- December 1-4 : Marblehead Christmas Walk
- December 2-4 : Historic Salem Christmas Walk
- December 2 & 9 : Holiday Invitation Nights, Newburyport
- December 3-4 : Christmas in Salem
- December 31 : New Year's Rockport Eve

2012

- February 3-14 : Salem So Sweet Chocolate & Ice Sculpture Festival
- February 3-5 : Cape Ann Birding Weekend
- February 11 : Merrimack River Eagle Festival

Winter 2011/12

Fall 2011

- September 16-18 & 23-25 : Trails & Sails, Essex County
- September 24-25 : Fall Festival, Marblehead
- September 30-October 10 : Topsfield Fair
- October 1-31 : Haunted Happenings, Salem
- October 22 : Robert Frost Poetry Festival, Lawrence
- October 8-10 : Cape Ann Artisan's Studio Tour
- October 9-10 : Fall Harvest Festival, Newburyport
- October 15 : Rockport HarvestFest
- October 22 : Essex Clamfest
- October 22 : Oktoberfest, Newburyport
- October 23 : Fall Haul & Mighty Merrimack Rowing Race, Newburyport
- November 1-30 : Salem Art & Antiques Month
- November 6-10 : Salem Fall Restaurant Week

For a complete listing of events North of Boston, visit www.northofboston.org.



Holiday Festivities in Newburyport

Peter Zoltai



Bird Watchers at Cape Ann Birding Weekend.

Tom Robinson-Cox

Art & History Intertwine

The artistic heritage and natural beauty of the region is well known. From rocky coastlines to lush forests, the natural environment expresses itself in dramatic range. Even the quality of light – dancing on water or reflecting a morning mist – has been described as utterly unforgettable. Famous artists, movie producers and literary legends have called the region home and have left behind wonderfully restored mills, historical homes, spectacular works of art and museum highlighting the area's storied past. Walk in their footsteps and be inspired.



Twin Lights Studio, Rockport

Above: A potter giving live demonstration during the Cape Ann Artisans Tour. Right: Galleries line the streets in the Rocky Neck Art Colony, one of America's oldest continually working art colonies.

Judy Robinson-Cox



Travelogue

"If you like architecture and grand, old houses steeped in history, don't miss Chestnut Street in Salem, Massachusetts. Placed in the heart of the McIntire Historic District, Chestnut Street is lined with beautiful houses, many originally built by sea captains and merchants between 1800 & 1840, during Salem's "Great Age of Sail."

You have several options for getting to Chestnut Street. If it's a nice day, park downtown and walk. (Pick up a sandwich on the way and have a picnic in the small park across from Hamilton Hall at #9 Chestnut Street.) Otherwise, if you need to drive, there is plenty of free parking on Chestnut Street. Another fun option if you want an overview of Salem, is to get on the Salem Trolley downtown and take it to Historic New England's Phillips House. The Phillips House, a house museum at 34 Chestnut Street, is a trolley stop where you can get on and off every hour or half hour, depending on how many trolleys are running."

NG

Gloucester Maritime Heritage Center
 23 Harbor Loop, Gloucester, MA 01930
 978-281-0470
www.gloucestermaritimecenter.org

Explore Gloucester's maritime heritage and working waterfront. Indoor/outdoor exhibits focusing on the history of the fishing industry, boatbuilding, marine science. Aquarium with touch tanks. Gift shop. \$5/ adults, \$4/seniors, \$2/children, \$10 family maximum. May – November.

Ipswich Visitor Center
 36 South Main Street, Ipswich, MA 01938
 978-356-8540
www.ipswichma.com

Settled in 1634, one of the oldest towns in America. With 58 pre-1725 homes, Ipswich is rich in history, the birthplace of American Independence and America's oldest continuous working farm.

Marblehead, Massachusetts (Home of the "Spirit of '76")
 62 Pleasant Street,
 Marblehead, MA 01945
 781-631-2868
www.visitmarblehead.com

Lodging, Shopping, Dining, Recreation and Attractions information. Enjoy Marblehead's history and seaside beauty with a free Audio Walking Tour. Download from your computer before you leave home!



House of Seven Gables, Salem

Jarett Kobek



A National Landmark and Working Museum, Lowell's Boat Shop in Amesbury has been custom building dories & skiffs since 1793.

New England Pirate Museum

274 Derby Street, Salem, MA 01970
978-741-2800
www.piratmuseum.com

Roam a colonial seaport, board a pirate ship, stroll through an 80-foot cave, and encounter 17th century sea-robbers. Open daily 10am-5pm, May-October, weekends April & November. Combination Tickets available with Witch Dungeon and Witch History Museum.

Peabody Essex Museum

161 Essex Street, Salem, MA 01970
866-745-1876
www.pem.org

Experience unrivaled collections from New England and around the world! See engaging

special exhibitions, visit our interactive family center and tour historic homes, including a 200-year-old Chinese house.

Rockport Music/Shalin Liu Performance Center

37 Main Street, Rockport, MA 01966
978-546-7391
www.rockportmusic.org

Rockport Music offers year-round performances of classical, jazz, and world music; high-definition broadcasts from the Metropolitan Opera and England's National Theatre; and film presentations. 2011 summer concerts celebrate the 30th anniversary of the Rockport Chamber Music Festival (June 9-July 17).

Rocky Neck Art Colony

Rocky Neck Avenue, Gloucester, MA 01930
978-282-0917
www.rockyneckartcolony.org

One of America's most important artistic communities, the Rocky Neck Art Colony is a charming enclave of galleries, studios, and shops that includes eclectic restaurants and accommodations with waterfront views.

Salem Waterfront Hotel & Marina

225 Derby Street, Salem, MA 01970
888-337-2536/978-740-8788
www.salemwaterfronthotel.com

Salem's newest boutique hotel. 6 nautical and contemporary guest rooms. Dine in at the Regatta Pub. Perfect location for weddings, corporate meetings and social gatherings.

Salem Witch Museum

Washington Square, Route 1A, Salem, MA 01970
978-744-1692
www.salemwitchmuseum.com

Discover the history of witches. From pagan times to the present, the museum examines the Salem Witch Trials of 1692, the stereotypical witch, modern witchcraft and the phenomenon of witch-hunts. Do you believe in witches? Don't answer until you see Salem's most visited museum.

Connecting people to place. Authentic New England experiences.



Explore Salem & Saugus National Historic Sites and a world of fun, in the Essex National Heritage Area

- National Park Service Junior Ranger Day, April 23
- Salem Maritime Festival, August 5
- Gloucester Schooner Festival, September 3 - 5
- Trails & Sails, September 16 - 18 & 23 - 25



nps.gov/sair • essexheritage.org • nps.gov/sama

Witch Dungeon Museum

16 Lynde Street, Salem, MA 01970
978-741-3570
www.witchdungeon.com

Tour the Dungeon and witness the performance of a Witch Trial adapted from 1692 historical transcripts. Open daily 10am-5pm, April-November. Combination Tickets available with Witch History and New England Pirate Museum.

Witch History Museum

197-201 Essex Street (on the Pedestrian Mall), Salem, MA 01970
978-741-7770
www.witchhistorymuseum.com

The stories of 1692 are told through a historically accurate live presentation followed by a guided tour. Open daily 10am-5pm, April-November. Combination Tickets available with Witch Dungeon and New England Pirate Museum.

See page 38 for more listings



ROCKPORT CHAMBER MUSIC FESTIVAL

DAVID DEVEAU, Artistic Director

30TH
ANNIVERSARY SEASON
June 9 – July 17, 2011

"One of New England's most magical spots"

BOSTON GLOBE

22 Concerts featuring world-renowned soloists and ensembles at the Shalin Liu Performance Center.

SUMMER HIGHLIGHTS

- Red Priest
- Paula Cole
- Tom Rush
- David Finckel, cello
- Wu Han, piano
- Borromeo String Quartet
- Anne Akiko Myers, violin
- Russell Sherman, piano

Also presenting 12 jazz, pop and world music concerts

July 23 - August 27



Visit www.rockportmusic.org for a full schedule of events! 978.546.7391

The House of the Seven Gables

An American Masterpiece... A New England Treasure



In 1668, Captain John Turner built a house destined to inspire Nathaniel Hawthorne and intrigue visitors for centuries. Join us this year as we celebrate our organization's 100 year commitment to Education, Preservation and Community Service.

- **Discover** The Gables' many surprises including some of the country's earliest architecture and a climb up the famous secret staircase.
- **Explore** the Nathaniel Hawthorne House for a glimpse at the life and literary legacy of the author of *The House of the Seven Gables* and *The Scarlet Letter*.
- **Visit** Kid's Cove at The Gables for an interactive family experience.
- **Stroll** through stunning three-season gardens and enjoy views of Salem Harbor at this exceptional oceanfront location.
- **Shop** for exclusive items, unique gifts, books and souvenirs in our Museum Store, located in the Retire Beckett House (1655) and enjoy a delicious lunch at the café.

Hours

10:00AM-5:00PM
November-June
10:00AM-7:00PM
July-October

Last tour departs at closing.
Closed the first two weeks of January, Thanksgiving and Christmas.

The House of the Seven Gables
115 Derby Street, Salem, MA 01970
978-744-0991 www.7gables.org
Follow us on Facebook and Twitter

Warm Hospitality

blue, the inn on the beach

Family-friendly, pet-friendly, couple-friendly...you'll find the lodging option for you North of Boston. Unwind at one of our luxury properties with a soak in a Jacuzzi followed by a massage. Stay at a quaint Bed & Breakfast full of history and personality. Splash to your heart's content in a pool or at an indoor water park. Count the stars in the night sky while camping along the beach. You're sure to feel at home no matter your style or budget. Less than twelve miles from downtown Boston, the region has perfect accommodations for romance, family fun, girlfriend getaways or special events.

**Atlantic Vacation Homes
AVH Realty, Inc**
115 Prospect Street, Gloucester, MA. 01930
978-283-4777 or 866-204-4777
atlanticvacationhomes.com

Offering the largest and most select inventory of beach houses, condos, oceanfront estates and cottages on Boston's North Shore. We specialize in vacations, long term rentals and relocations. Thinking about buying or selling? Call our AVH Realty, Inc. division and speak with one of our agents directly by calling 978-282-7747 or visit www.avrealty.com

Beverly Garden Suites
5 Lakeview Avenue, Route 1A
North Beverly, MA 01915
978-922-7535 / 800-922-7535
www.beverlygardensuites.com

One mile north off Route 128 at exit 20A. Between Salem and Cape Ann. Newly renovated; mostly suites, including kitchens. Phone, laundry, a/c. Ideal for families. Walk to restaurants and Boston train. In-room wireless. Nightly and weekly rates.

blue, The Inn on the Beach
20 Fordham Way, Plum Island
Newbury, MA 01951
978-465-7171 www.blueinn.com

Escape. 13-accommodations located in the dunes of one of New England's most beautiful beaches, blue's intimate size and concierge-level service ensures that you will receive the ultimate in personal attention.

Boston Marriott Peabody
8A Centennial Drive, Exit 28 off Route 128,
Peabody, MA 01960
978-977-9700
www.peabodymarriott.com

Marriott's premier North Shore hotel featuring 256 rooms with FREE high speed Internet access, Sophia's restaurant, indoor pool, whirlpool and exercise room. Convenient to Boston, Salem, Gloucester, beaches, and shopping.

Cape Ann Motor Inn
33 Rockport Road, Gloucester, MA 01930
978-281-2900 capeannmotorinn.com

The Cape Ann Motor Inn, directly on Long Beach, is open year round. Call 800-464-8439 or visit our website at www.capeannmotorinn.com. All rooms face ocean as well as the twin lighthouses on Thatcher's Island.

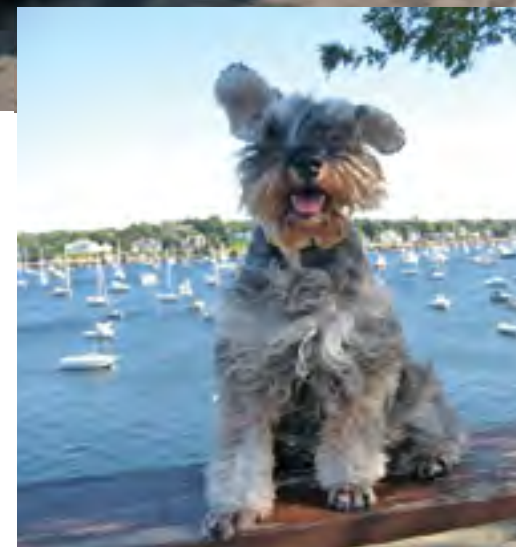
Clipper Ship Inn
40 Bridge Street, Salem, MA 01970
978-745-8022 www.clippershipinn.com
Nestled on 3 acres, we offer spacious room/suites at budget friendly rates. Ample parking available and located close to historic attractions, restaurants, and recreational areas. Satellite TV and pet friendly. WIFI.

Comfort Inn North Shore/Danvers
50 Dayton Street, Danvers, MA 01923
978-777-1700
www.comfortinndanvers.com
Offering affordable and comfortable accommodations, the Comfort Inn is located 12 miles from Boston and 7 miles from Salem. Enjoy complimentary deluxe continental breakfast every morning. High speed Internet, Indoor/outdoor heated pool.



Less than 12 miles from Boston, the North of Boston region has perfect accommodations for romance, family fun, girlfriend getaways, and special occasions.

Emerson Inn by the Sea
1 Cathedral Ave., Rockport, MA 01966
800-964-5550 / 978-546-6321
www.emersoninnbythesea.com
Historic Oceanfront Accommodations. 36 guest rooms, some with ocean views and spa tubs, and two seaside cottages. Sweeping veranda, beautiful grounds, heated seasonal pool. Perfect for weddings, corporate meetings and retreats. Full service dinner restaurant.



Oscar the travelling dog.

Tim Grafft

Travelogue
"Hi, my name is Oscar and I love traveling around the North of Boston region. This past weekend I went up to Salem and had a great time. I really like the view from the Custom House steps, so I can see all of the Harbor and the Friendship ship. Strolling through the historic streets makes me feel like I'm walking through history. My favorite street is Chestnut, with its wide brick streets and famous New England architecture. Maybe someday my owners will buy a mansion there so I could walk to the water whenever I want. You never know who you will sniff in Salem, people and dogs come from all over to experience its beauty. I'm going to ask my owners to take me back there soon. I have a crush on a dachshund named Pepper who visits there too and I want to meet her again!"
Oscar the dog, Boston



The North of Boston region offers all types of accommodation from romantic getaways, to family-friendly resort or business hotels.

Essex Street Inn
 7 Essex Street, Newburyport, MA 01950
 978-465-2148
www.essexstreetinn.com

The Essex Street Inn with its Corporate Conference Center is located in the heart of downtown Newburyport. It contains 37 beautifully appointed rooms/suites for both business and pleasure.

Fairfield Inns by Marriott North of Boston
 Three convenient locations: Amesbury/
 Newburyport Seacoast, Tewksbury/
 Andover and Woburn/Boston.
 Visit us online at: www.fairfieldinn.com

Stay with us and discover great things to see and do. Complimentary breakfast, internet, parking and more. Take advantage of our low rates! Woburn: 781-938-7575; Tewksbury/
 Andover: 978-640-0070; Amesbury/
 Newburyport: 978-388-3400.

SPECIAL PROMOTIONS

Discounted packages combining lodging with spa services, dinners, museum passes and more make it even easier for you to book your kind of vacation. You'll find them at www.northofboston.org.

Harbor Light Inn
 58 Washington Street,
 Marblehead, MA 01945
 781-631-2186 harborlightinn.com

"One of USA's 10 Most Romantic Inns"-
 Vacation Mag. Federalist mansion in the heart of historic harbor district. Cozy Tavern, elegant bed chambers with fireplace, breakfast buffet, heated pool.

Holiday Inn & Suites Boston - Peabody
 1 Newbury Street, Peabody, MA 01960
 978-535-4600
www.holidayinn.com/bos-peabody

Come see the "new" Holiday Inn & Suites Boston Peabody. Our 183 guest room, 20 suite property amenities include: free parking, indoor pool, breakfast buffet & Carrabba's Italian Grill.

Sheraton Colonial Boston North Hotel & Conference Center
 1 Audubon Road, Exit 42, Route 128/I-95,
 Wakefield, MA 01880
 781-245-9300 sheraton.com/colonial

This beautifully restored 280-room hotel is just 12 miles north of Boston. Features include over 14,400 square feet of function space, the Boston Sports Club, and the North Shore's premier IACC certified executive conference center. Nearby, take advantage of all that Boston and the historic North Shore have to offer.

Wylie Inn & Conference Center
 295 Hale Street, Beverly, MA 01915
 978-867-1800 / 866-333-0859
www.wyliecenter.com

Situated on Boston's picturesque north shore, the Wylie Inn & Conference Center offers 92 beautifully appointed guestrooms & 17,500 square feet of dedicated IACC certified meeting space, located just moments away from shopping, art galleries, museums, whale watching & more.

See page 38 for more listings



Ballardvale Dam, Andover



THE SALEM WATERFRONT HOTEL & MARINA
Perfection on Pickering Wharf

"comfortable, sophisticated style"
 - Boston Globe

**A SHORT FERRY RIDE FROM BOSTON...
 FOUR CENTURIES AWAY FROM RTE. 128**

At the beautifully appointed Salem Waterfront Hotel & Marina, you'll experience 21st-century amenities in the heart of 17th-Century Salem. Enjoy our balmy indoor pool, fitness center, full-service marina and all the luxury you'd expect from a city hotel. We are consistently voted 'Best of the Northshore,' so come see what makes us so very special.

2010 BEST of northshore

For more information, call **978-740-8788** and visit us at salemwaterfronthotel.com.

RJC REGATTA PUB
Cool & Casual Fare with Flair

Our chef has honed his skills on the PGA Tour & at Gillette Stadium. Come taste why he was named "One of the 26 to watch" by Pulse Magazine!

At the Salem Waterfront Hotel & Marina
 225 Derby Street • Salem, MA 01970 978-740-8788



Lighthouses North of Boston

- Annisquam Light**
Lighthouse Road, Gloucester
- Baker's Island Light**
Baker's Island, Salem
- Derby Wharf Light**
Derby Wharf, Salem
- Eastern Point Light**
Eastern Point, Gloucester
- Fort Pickering Light**
Winter Island, Salem
- Marblehead Light**
Follett Street, Marblehead
- Newburyport Range Lights**
Water Street, Newburyport
- Plum Island Light**
Plum Island, Newburyport
- Hospital Point Light**
Bay View Road, Beverly
- Straitsmouth Island Light**
Straitsmouth Island, Rockport
- Ten Pound Island Light**
Ten Pound Island, Gloucester
- Thacher Island Twin Lights**
Thacher Island, Rockport

Boston's North Shore Retreat

Situated on a picturesque stretch of Atlantic coast, the Wylie Inn & Conference Center offers comfortable, well-appointed accommodations, state-of-the-art conference center and an elegant social event venue, Tupper Manor. For reservations call 866 333 0859.

295 Hale Street, Beverly, MA • www.WylieCenter.com

THE NORTH SHORE'S BEST PLACE TO STAY...AND PLAY.

Whether it is through our thoughtful amenities like free high-speed Internet access in our guest rooms, elegant function space, customized catering menus or simply our exceptional service, the Boston Marriott Peabody strives to provide you with effortless travel. Located on Boston's North Shore, we're the perfect place to stay when you want first-class accommodations and service close to everything.

To make a reservation or for more information, call 978.977.9700 or visit PeabodyMarriott.com.

BOSTON MARRIOTT PEABODY

8A Centennial Drive, Peabody, Massachusetts 01960
Phone 978.977.9700, Fax 978.977.0297, PeabodyMarriott.com



2011
What a beautiful season it's going to be!

Season tickets now on sale
www.bostonlobsters.net



For more information call 508-435-6585

ROCKPORT INN & suites

- Pet friendly
- Complimentary deluxe continental breakfast
- Free wireless internet
- Indoor pool and hot tub
- Tennis courts
- Groups welcome
- Banquet space

183 Main St. Rockport, MA 01966
978.546.3300 www.rockportinnandsuites.com



ANDOVER INN
DINING LODGING FUNCTIONS

SAMUEL'S
4 Chapel Avenue / Andover, MA
978.775.4900 • www.acc-andoverinn.com

Elegant dining or casual lounge

Created with skill and passion, our cuisine is traditional New England style with a contemporary flair featuring fresh offerings from local sustainable farms.

Join us in our main dining area for an elegant meal and a spectacular brunch or chose a quick bite in our lounge. We look forward to welcoming you back with warm hospitality and fine service at the Andover Inn.

MODERN COMFORTS. HISTORIC STYLE.

There is only one choice when it comes to accommodations in Salem:

The Hawthorne Hotel

Our historic setting offers all of the modern conveniences of home, including wireless Internet—as well as personalized service and attention to detail. Dine in Nathaniel's restaurant, relax in the Tavern and take a short stroll to all the major Salem attractions and shops!

We are only 16 miles north of Boston, easily accessible by both commuter train and the Boston to Salem ferry.

For reservations, please call 800-729-7829 or visit www.hawthornehotel.com

Sharon's Studio of Gloucester



The Cape Ann Marina is the perfect waterside venue for an intimate wedding.

Cliff Amero



Take your event to the beach with Essex River Cruises or the Inn at Castle Hill.

Function & Event Locations

Host your wedding, conference, family reunion or other special event in the North of Boston region where you'll find welcoming venues of all kinds. Find the right place for your event with this handy guide, organized by region with information about the type of facility, number of guest rooms, and meeting, banquet and reception capacity.

BUSINESS	CITY	IDEAL GROUP SIZE	MEETING CAPACITY	BANQUET CAPACITY	RECEPTION CAPACITY	# OF GUEST ROOMS	TYPE OF FACILITY
CAPE ANN							
7 Seas Whale Watch	Gloucester	150	150	150	150		🚤
Adventures at Yankee Fleet	Gloucester	150	150		150		🚤
Atlantic Vacation Homes- Belle View House	Gloucester	18	18	18		6	🏠
Atlantic Vacation Homes- Red Roof	Gloucester	10	25	25		5	🏠
Beauport, Sleeper-McCann House	Gloucester	30	25		50		🌳
Brackett's Ocean View Restaurant	Rockport	10-100		50-100	50-100		🍷
Cape Ann Whale Watch	Gloucester	150-200			250		🚤
Cape Ann's Marina Resort & Spa	Gloucester	20-100	25-100	40	100	31	🏠
Capt. Bill & Sons Whale Watch	Gloucester	10-150	150	150	150		🚤
Cogswell's Grant (Historic House Museum)	Essex			165 acre grounds			🌳
Emerson Inn By The Sea	Rockport	120	75	150	150	36	🏠
Essex Conference Center & Retreat	Essex	45	75	75	165	20	🏠
Essex Historical Society & Shipbuilding Museum	Essex	60-90	90	60	100		🍷
Essex River Cruises & Charters	Essex	10-90	90	60	60		🚤
Gloucester House	Gloucester	30-160		90-200	250		🍷
Gloucester Maritime Heritage Center	Gloucester	50-170	50	60-170	60-170		🍷
Gloucester Stage Company	Gloucester	100-150		65	100-150		🍷
Linden Tree Inn	Rockport	16	16	16	16	18	🏠
North Shore Arts Association of Gloucester	Gloucester	50-200	50	125	200		🍷
Rockport Inn and Suites	Rockport	50-60	50	70	70	79	🏠
Rockport Music, Shalin Liu Performance Center	Rockport	25-100	50-75	110-150	200		🍷
Schooner <i>Thomas E. Lannon</i>	Gloucester	49	49	49	49		🚤
Seaward Inn	Rockport	2-50		75	80	17	🏠
The Vista Motel	Gloucester	16	16			40	🏠
Woodman's of Essex	Essex	15-50	75	75	75		🍷
Woodman's of Essex - Essex Room	Essex	150	220	300	375		🍷
GREATER NEWBURYPORT							
Ashworth by the Sea	Hampton, NH	4-400	400	275	400	125	🏠
Blue Ocean Music Hall	Salisbury	80-450	80-450	80-250	125-500		🍷

KEY

- 🏠 Accommodations with Function Space
- 🍷 Unique Meeting & Reception Sites
- 🚤 Boat Venues
- 🌳 Outdoor Venues
- 🍷 Restaurants with Private Function Space

Function & Event Locations (cont.)

BUSINESS	CITY	IDEAL GROUP SIZE	MEETING CAPACITY	BANQUET CAPACITY	RECEPTION CAPACITY	# OF GUEST ROOMS	TYPE OF FACILITY
GREATER NEWBURYPORT (CONT)							
blue, the Inn on the Beach	Newbury	35	40	40	40	14	🏠
Custom House Maritime Museum	Newburyport	50	74	75-125	75-150		🍷
Essex Street Inn	Newburyport	15-18	18-20			37	🏠
Ipswich Museum	Ipswich	50	25	70	80		🍷
Lighthouse Preservation Society	Newburyport	4	4	4			🍷
Maudslay Art Center	Newburyport	150	150-300	150-300	150-300		🍷
Michael's Harborside	Newburyport	50	70	50	50		🏠
Newburyport Whale Watch	Newburyport	120			149		🚤
Phoenix Room	Newburyport	100	130	120	120		🏠
Seacoast Events - 48 ft. Catamaran	Newburyport	30	48	24	48		🚤
Seaglass Restaurant	Salisbury	100	75	100	124		🏠
Spencer-Peirce-Little Farm - Carriage House	Newburyport	35-40	40	30	40		🍷
Spencer-Peirce-Little Farm - grounds	Newbury	100-250	250	250	250		🌳
Ten Center Street	Newburyport	50	65	50	50		🏠
The Actors Studio of Newburyport	Newburyport	50	15		75		🍷
The Inn at Castle Hill on the Crane Estate	Ipswich			30	40	10	🏠
Trustees of Reservations, The Crane Estate	Ipswich	200	16-140	160-275	200-300		🍷
GREATER SALEM							
Beverly Historical Society & Museum - Cabot House	Beverly	20	35	30	60		🍷
Boston Marriott Peabody	Peabody	15-400	10-400	240-360	315-400	256	🏠
CAPT'S Waterfront Grill & Pub	Salem	30-80		100	125		🏠
Comfort Inn - North Shore	Danvers	25		50		140	🏠
Courtyard by Marriott Danvers	Danvers	10-75	30	32-75	40-75	121	🏠
Crowne Plaza Boston North Shore	Danvers	800	1400	1000	1500	366	🏠
Endicott College	Beverly	10-500	10-500	10-500	300		🍷
Enterprise Center at Salem State College	Salem		10-130				🍷
FINZ Seafood & Grill	Salem	100	75	125			🏠
Gordon College	Wenham	12-1500	1500	500	500		🍷
Green Meadows Farm	Hamilton	20-50		40	50-100		🌳
Hamilton Hall	Salem	160-350	200	160	350		🍷
Harbor Light Inn	Marblehead	16-22	22	40-60	100	21	🏠
Hawthorne Hotel	Salem	50-100	50-75	190	350	93	🏠
Holiday Inn & Suites Boston-Peabody	Peabody	75	500	350	350	183	🏠



The chef at work.



Salads lined up to be served.

Tom Robinson-Cox

KEY

- 🏠 Accommodations with Function Space
- 🍷 Unique Meeting & Reception Sites
- 🚤 Boat Venues
- 🌳 Outdoor Venues
- 🏠 Restaurants with Private Function Space

Function & Event Locations (cont.)

BUSINESS	CITY	IDEAL GROUP SIZE	MEETING CAPACITY	BANQUET CAPACITY	RECEPTION CAPACITY	# OF GUEST ROOMS	TYPE OF FACILITY
GREATER SALEM (cont)							
Homewood Suites by Hilton	Peabody	10-30	30			85	🏠
Legal Seafoods	Peabody		28	28	28		🏠
Lynn Arts, Inc.	Lynn	100	100		150		🍷
Marblehead Arts Association	Marblehead	50-100	50	50-100	50-100		🍷
Peabody Essex Museum	Salem	250	190	350	700		🍷
Salem Maritime National Historic Site	Salem	8-80	150	150	200		🍷
Salem Waterfront Hotel & Suites	Salem	20-200	325	200	350	86	🏠
SpringHill Suites by Marriott Boston Peabody	Peabody	20-200	150	230	275	164	🏠
The Exchange at The Wenham Tea House	Wenham	75-150	75	75	120		🏠
The House of the Seven Gables - Holyoke & Plumsock Rooms	Salem	25-80	25-80	80	100		🍷
The House of the Seven Gables - Seaside Lawn	Salem	100-200		200	300		🌳
The Landing Restaurant	Marblehead	50		100	100		🏠
The Salem Ferry	Salem	149		149	149		🚤
The Witches Cottage at The Griffen Theatre	Salem	65-90			40		🍷
The Wylie Inn & Conference Center - Tupper Manor	Beverly		5-115	200	200	92	🏠
Topsfield Fairgrounds - Coolidge Hall	Topsfield	75-250	350-400	300	300		🍷
Victoria Station	Salem	10-200			200		🏠
Wenham Museum	Wenham	60	60	60	60-100		🍷
Willowdale Estate	Topsfield	200	100	220	240		🍷
MERRIMACK VALLEY							
Amesbury Playhouse	Amesbury	180	160-180	175	160		🍷
Amesbury Sports Park - banquet facilities	Amesbury	10-120	75-90	10-120	120-150		🍷
Amesbury Sports Park - grounds	Amesbury	20-2000					🌳
Best Western Merrimack Valley	Haverhill	40	90	90	90	126	🏠
Boston Andover Homewood Suites by Hilton	Andover	30	60	50	50	82	🏠
Lowell's Boat Shop	Amesbury	30	20-30	50-75	50-75		🍷
Staybridge Suites Boston/Andover	Andover	20	20	20	20	133	🏠
GREATER BOSTON							
Holiday Inn Select	Woburn	35-90	300	225	400	195	🏠
Sheraton Colonial Hotel & Conference Center	Wakefield	10-350	10-350	300	400	280	🏠
Super Tours - Upper Deck Trolley	Charlestown	33-45	33-45				🍷
Super Tours - Duck Boat	Charlestown	49	49				🍷
The Four Points By Sheraton Boston Logan Airport	Revere	14-70	100	120	140	180	🏠



Elegant deserts make your event extra special.



Tables set for a wedding.

Tuck Inn

Harbor Sweets

Directory of Resources

North of Boston Convention and Visitor's Bureau members look forward to serving you.

ARTS, THEATRE & MUSIC

Blue Ocean Music Hall

4 Ocean Front North,
Salisbury, MA 01952
(978) 462-5888, blueoceanhall.com

Cape Ann Artisans

428 Washington Street,
Gloucester, MA 01930
(978) 281-3347, capeannartisans.com

Firehouse Center for the Arts

Market Square,
Newburyport, MA 01950
(978) 462-7336, firehouse.org

Gloucester Stage Company

267 East Main Street,
Gloucester, MA 01930
(978) 281-4433, gloucesterstage.com

History Alive!

255 Grapevine Road,
Wenham, MA 01984
(978) 867-4767
gordon.edu/historyalive

LynnArts, Inc.

25 Exchange Street, Lynn, MA 01901
(781) 598-5244, lynnarts.org

Marblehead Arts Association

8 Hooper Street,
Marblehead, MA 01945
(781) 631-2608, marbleheadarts.org

Maudslay Arts Center, Inc.

95 Curzon's Mill Road,
Newburyport, MA 01950
(978) 857-0677
maudslayartscenter.org

Montserrat College of Art

23 Essex Street, Beverly, MA 01915
(978) 921-4242, montserrat.edu

North Shore Arts Association of Gloucester, Inc.

11 Pirate's Lane, Gloucester, MA 01930
(978) 283-1857, nsarts.org

North Shore Music Theatre

62 Dunham Road, Beverly, MA 01915
(978) 232-7200, nsmt.org

Rockport Music

37 Main Street, Rockport, MA 01966
(978) 546-7391, rcmf.org

Rocky Neck Art Colony

53 Rocky Neck Avenue,
Gloucester, MA 01930
(978) 282-0917
rockyneckartcolony.org

Salem State College Center for the Arts

352 Lafayette Street,
Salem, MA 01970
(978) 542-7890, salemstate.edu/arts

Society for the Encouragement of the Arts (seARTS)

P.O. Box 1476, Gloucester, MA 01930
(978) 281-1222, searts.org

The Actors Studio of Newburyport

50 Water Street, Mill #1, Suite 5,
Newburyport, MA 01950
(978) 465-1229
newburyportacting.org

The Amesbury Playhouse

194 Main Street, Amesbury, MA 01913
(978) 388-9444
amesburyplayhouse.com

The Witches Cottage at The Griffen Theatre

7 Lynde Street, Salem, MA 01970
(978) 317-1169, griffentheatre.com

BREWERIES & DISTILLERIES

Cape Ann Brewing Co.

11 Rogers Street,
Gloucester, MA 01930
(978) 282-7399, capeannbrewing.com

Ryan & Wood Inc., Distilleries

15 Great Republic Drive,
Gloucester, MA 01930
(978) 281-2282, ryanandwood.com

BUSINESS SERVICES

A. P. Vending & Amusement Company, Inc.

244 Newburyport Turnpike,
Rowley, MA 01969
(800) 244-3031, apvending.com

AEGIS Financial Strategies, Inc.

143 Essex Street, Suite 206,
Haverhill, MA 01832
(978) 374-1182, aegisfin.com

Chase & Lunt Insurance Co.

47 State Street,
Newburyport, MA 01950
(978) 462-4434, chaseandlunt.com

CTM Media Group

30B Sixth Road, Woburn, MA 01801
(781) 935-6690, ctmmediagroup.com

Encompass Premiums & Apparel

483 B Merrimac Street,
Newburyport, MA 01950
(781) 724-7018, encompa.com

Leslie S. Ray Insurance Agency, Inc.

129 Dodge Street, Beverly, MA 01915
(978) 927-2600, leslieray.com

Meerkat Technology

1740 Massachusetts Avenue,
Boxborough, MA 01719
(978) 264-9123, mkat.com

Net Atlantic Internet Services

10 Federal Street, Suite 26,
Salem, MA 01970
(978) 219-1900, netatlantic.com

New England Tourism Centre

2419 Guénette Street,
St. Laurent, (Montreal)
Quebec, Canada H4R 2E9
(888) 640-3925, ne-tc.com



COMMUNITY RESOURCES

Amesbury Chamber of Commerce & Industrial Foundation, Inc.

5 Market Square,
Amesbury, MA 01913
(978) 388-3178
amesburychamber.com

Beverly Chamber of Commerce

28 Cabot Street, Beverly, MA 01915
(978) 232-9559, beverlychamber.com

Cape Ann Chamber of Commerce

33 Commercial Street,
Gloucester, MA 01930
(978) 283-1601, capeannchamber.com

City of Newburyport

60 Pleasant Street,
Newburyport, MA 01950
(978) 465-4413
cityofnewburyport.com

Destination Salem

City Hall, 3rd Floor, Salem, MA 01970
(877) SALEM-MA / (978) 741-3252
salem.org

Discover Gloucester / Seaport Gloucester

Destination Marketing Organization
P.O. Box 6103, Gloucester, MA 01930
(978) 290-9723
discovergloucester.com

Enterprise Center at Salem State College

121 Loring Avenue, Suite 104,
Salem, MA 01970
(978) 542-7528, enterprisectr.org

Essex National Heritage Commission

221 Essex Street, Suite 41,
Salem, MA 01970
(978) 740-0444, essexheritage.org

Gloucester Visitor Welcoming Center

Stage Fort Park, Routes 133 and 127,
Gloucester, MA 01930
(978) 281-8865, gloucesterma.com

Greater Newburyport Chamber of Commerce & Industry

38R Merrimac Street,
Newburyport, MA 01950
(978) 462-6680
newburyportchamber.org

Haverhill Visitors Center

240 Water Street, Haverhill, MA 01830
(978) 994-9252, winnekenni.com

Ipswich Chamber of Commerce

2 East Street, Ipswich, MA 01938
(978) 356-9055, ipswichchamber.org

Ipswich Visitor Center

36 South Main Street,
Ipswich, MA 01938
(978) 356-8540, ipswichma.com

Lynn Area Chamber of Commerce

100 Oxford Street, Lynn, MA 01901
(781) 592-2900
lynnareachamber.com

Marblehead Chamber of Commerce

62 Pleasant Street,
Marblehead, MA 01945
(781) 631-2868
marbleheadchamber.org

Maria Miles Visitor Center

Exit 60, Rt. I-95 Southbound,
Salisbury, MA 01952
(978) 465-6555
essexheritage.org/visitorcenters/mariamiles.shtml

Merrimack Valley Chamber of Commerce

264 Essex Street, Lawrence, MA 01840
(978) 686-0900
merrimackvalleychamber.com

Merrimack Valley Economic Development Council, Inc.

1600 Osgood Street,
North Andover, MA 01845
(978) 975-8787, merrimackvalley.info

North of Boston Convention & Visitors Bureau

10 State Street, Suite 309,
Newburyport, MA 01950
(877) 662-9299 / (978) 225-1559
northofboston.org

North Shore Chamber of Commerce

5 Cherry Hill Drive, Suite 100,
Danvers, MA 01923
(978) 774-8565
northshorechamber.org

North Shore Community College

1 Ferncroft Road, Danvers, MA 01923
(978) 762-4000, northshore.edu

Salem Chamber of Commerce

265 Essex Street, Salem, MA 01970
(978) 744-0004, salem-chamber.org

Salisbury Beach Partnership, Inc.

98 Elm Street, Salisbury, MA 01952
(978) 462-7274, beachfests.org

Salisbury Chamber of Commerce

P.O. Box 1000, Salisbury, MA 01952
(978) 465-3581
salisburychamber.com

FARMS, RECREATION & FAMILY FUN

Amesbury Sports Park

12 South Hunt Road,
Amesbury, MA 01913
(978) 388-5788
amesburysportspark.net

Boston Lobsters Tennis - World Tennis Team

1 Third Road, Hopkinton, MA 01748
(508) 435-6585, bostonlobsters.net

Cider Hill Farm

45 Fern Avenue, Amesbury, MA 01913
(978) 388-5525, ciderhill.com

Green Meadows Farm

656 Asbury Street,
Hamilton, MA 01982
(978) 468-3720 / (978) 468-2277
gmfarm.com

Joe's Playland

15 and 12 Broadway,
Salisbury, MA 01952
(978) 465-8311, joesplayland.com

Laser Craze

1600 Osgood Street,
North Andover, MA 01845
(978) 689-7700, lasercraze.us

Parker River National Wildlife Refuge

6 Plum Island Turnpike,
Newburyport, MA 01950
(978) 465-5753
fws.gov/northeast/parkerriver

Russell Orchards, Inc.

143 Argilla Road, Ipswich, MA 01938
(978) 356-5366
russellorchardsma.com

Smolak Farms LLC

315 South Bradford Street,
North Andover, MA 01845
(978) 682-6332, smolakfarms.com

Topsfield Fair

207 Boston Street, Route 1,
Topsfield, MA 01983
(978) 887-5000, topsfieldfair.org

FUNCTION SPACE & EVENT PLANNERS

Endicott College

376 Hale Street, Beverly, MA 01915
(978) 927-0585, endicott.edu

Hamilton Hall

9 Chestnut Street, Salem, MA 01970
(978) 744-0805, hamiltonhall.org

NXTevent

850 Summer Street,
Boston, MA 02127
(800) 460-6005, nxtevent.com

Seacoast Events

5 California Street,
Newburyport, MA 01950
(978) 462-6877, seacoastevents.net

The Trustees of Reservations, Castle Hill

290 Argilla Road, Ipswich, MA 01938
(978) 356-4351, thetrustees.org

Willowdale Estate

24 Asbury Street, Topsfield, MA 01983
(978) 887-8211, willowdaleestate.com

GUIDED TOURS & TOUR PLANNING

Bay Colony Historical Tours, LLC

JFK Station, P.O. Box 9186
Boston, MA 02114-0041
(617) 523-7303
bostonreceptiveservices.com

Boston Super Tours

100 Terminal Street,
Charlestown, MA 02129
(877) 343-8257
bostonsupertours.com

Boston Tours, Inc.

56 Williams Street,
Waltham, MA 02154
(781) 899-1454, bostontours.com

Brush Hill Tours

435 High Street, Randolph, MA 02368
(781) 986-6100, brushhilltours.com

Derby Square Tours

86 Federal Street, Salem, MA 01970
(978) 745-6314, derbysquaretours.com

Don Quijote Tours of New England, Inc.

17 Reardon Street, Quincy, MA 02169
(617) 328-1333, tourboston.com

Hawthorne Tours

57 Wharf Street, Salem, MA 01970
(978) 744-5463, hawthornetours.com

Historic Tours of America / Old Town Trolley Tours

380 Dorchester Avenue,
Boston, MA 02127
(617) 269-7150
trolleytours.com/boston

Olde Ipswich Tours

8 Herrick Drive, Ipswich, MA 01938
(978) 356-5163, ipswichtours.com

Over The Bridge Tours of Cape Ann

P.O. Box 6108, Gloucester, MA 01930
(978) 282-3354
overthebridgetours.com

Salem Trolley

8 Central Street, Salem, MA 01970
(978) 744-5469, salemtrolley.com

TourMappers North America, LLC

132 Boylston Street,
Boston, MA 02216
(617) 236-1236, tourmappers.com

Wolfe Adventures & Tours

29 Groton Road, Shirley, MA 01464
(978) 448-3600, wolfetours.com

MEDIA, PRINTERS & DESIGNERS

Boston Globe Media

135 Morrissey Boulevard,
Boston, MA 02125
(617) 929-2200
bostonglobe.com/advertiser

Cook Bowe Communications

P.O. Box 64, West Newbury, MA 01985
(978) 317-2030
cookbowecommunications.com

Crickit Press

12 Summer Street,
Manchester, MA 01944
(978) 526-7131, cricketpress.com

Deschamps Printing Company, Inc.

3 Dodge Street, Salem, MA 01970
(978) 744-2152
deschampsprinting.com

Kishgraphics

46 English Street, Salem, MA 01970
(978) 828-0222
www.kishgraphics.com

Neoprint, Inc.

11 Alpha Road, Chelmsford, MA 01824
(978) 256-9939, neoprintinc.com

Pickering Web Design

12 Willowdale Road,
Topsfield, MA 01983
(978) 500-0459
pickeringwebdesign.com

The Journeyman Press

11 Malcolm Hoyt Drive,
Newburyport, MA 01950
(978) 463-6735, jpress.com

Yankee Publishing Incorporated

P.O. Box 520, Dublin, NH 03444
(800) 729-9265 / (603) 563-8111
ypi.com

MUSEUMS & HISTORIC PLACES

3-D Haunted House, 3-D Historical Adventure & Ghost Tours at Salem's 13 Ghosts

131 Essex St, Ste. 5, Salem, MA 01970
info@salem13ghosts.com
salem13ghosts.com

Addison Gallery of American Art

Phillips Academy, 180 Main Street,
Andover, MA 01810
(978) 749-4015, addisongallery.org

Beauport, Sleeper-McCann House

75 Eastern Point Boulevard,
Gloucester, MA 01930
(978) 283-0800
historicnewengland.org

Beverly Historical Society & Museum

117 Cabot Street, Beverly, MA 01915
(978) 922-1186, beverlyhistory.org

Cape Ann Museum

27 Pleasant Street,
Gloucester, MA 01930
(978) 283-0455, capeannmuseum.org

Cogswell's Grant

60 Spring Street, Essex, MA 01929
(978) 768-3632
historicnewengland.org

Custom House Maritime Museum

25 Water Street,
Newburyport, MA 01950
(978) 462-8681
customhousemaritimemuseum.org

Essex Historical Society & Shipbuilding Museum

66 Main Street, Essex, MA 01929
(978) 768-7541
essexshipbuildingmuseum.org

George Peabody House Museum & The Peabody Leatherworkers Museum

205 Washington Street
Peabody, MA 01960
(978) 531-0355
peabodymuseums.org

Directory of Resources (cont.)

Gloucester Maritime Heritage Center
23 Harbor Loop,
Gloucester, MA 01930
(978) 281-0470
gloucestermaritimecenter.org

Ipswich Museum
54 South Main Street,
Ipswich, MA 01938
(978) 356-2811, ipswichmuseum.org

Lowell's Boat Shop
459 Main Street,
Amesbury, MA 01913
(978) 834-0050, lowellsboatshop.com

New England Pirate Museum
274 Derby Street, Salem, MA 01970
(978) 741-2800, piratemuseum.com

Peabody Essex Museum
East India Square, Salem, MA 01970
(866) 745-1876, pem.org

Phillips House
34 Chestnut Street, Salem, MA 01970
(978) 744-0440
historicnewengland.org

Salem Maritime National Historic Site
160 Derby Street, Salem, MA 01970
(978) 740-1650, nps.gov/sama

Salem Wax Museum
288 Derby Street, Salem, MA 01970
(978) 740-2929
salemwaxmuseum.com

Salem Witch Museum
19 ½ Washington Square North,
Salem, MA 01970
(978) 744-1692
salemwitchmuseum.com

Saugus Iron Works
244 Central Street, Saugus, MA 01906
(781) 233-0050, nps.gov/sair

Spencer-Peirce-Little Farm
5 Little's Lane, Newbury, MA 01951
(978) 462-2634
historicnewengland.org

The House of the Seven Gables
115 Derby Street, Salem, MA 01970
(978) 744-0991, 7gables.org

The Witch House
310 1/2 Essex Street,
Salem, MA 01970
(978) 744-8815
salemweb.com/witchhouse

Wenham Museum
132 Main Street, Wenham, MA 01984
(978) 468-2377
wenhammuseum.org

Witch Dungeon Museum
16 Lynde Street, Salem, MA 01970
(978) 741-3570, witchdungeon.com

Witch History Museum
197-201 Essex Street,
Salem, MA 01970
(978) 741-7770
witchhistorymuseum.com

PHOTOGRAPHERS

David Fox Photographer
59 Fountain Street,
Framingham MA 01702
(800) 369-6527, (617) 734-6240
davidfoxphotographer.com

Fine Art Cape Ann Photography by Dale Blank
P.O. Box 1311, Gloucester, MA 01931
daleblank.com

Kindra Clineff Photography
PO Box 436, Topsfield, MA 01983
(888) 647-7700, kindraclineff.com

Robinson-Cox Photography
5 Haskell Court,
Gloucester, MA 01930
978-283-3598, robinson-cox.com

Sarah Musumeci Photography
63 Quail Run, North
Andover, MA 01845
(978) 688-1116, smbbuildings.com

TRANSPORTATION

Boston's Best Cruises - The Salem Ferry
Blaney Street, Salem, MA 01970
(978) 741-0220
bostonsbestcruises.com

MBT Worldwide, Inc.
951 East Street, Tewksbury, MA 01876
(877) 233-2424, mbtworldwide.com

New England Coach
17 Freetown Road,
Raymond, NH 03077
(866) 560-1919
newenglandcoach.com

WHALE WATCHING, FISHING & BOATING

7 Seas Whale Watch
Seven Seas Wharf, 63 Rogers Street,
Gloucester, MA 01930
(888) 283-1776
7seas-whalewatch.com

A Cape Ann Whale Watch
Rose's Wharf, 415 Main Street,
Gloucester, MA 01930
(800) 877-5110, (978) 283-5110
seethewhales.com

Adventures at Yankee Fleet
25 Rogers Street / 121 East Main
Street, Gloucester, MA 01930
(800) 942-5464 / (978) 283-0313
yankeefleet.com

Capt. Bill & Sons Whale Watch
24 Harbor Loop,
Gloucester, MA 01930
(800) 339-4253 / (978) 283-6995
captbillandsons.com

Essex River Basin Adventures (ERBA)
1 Main Street, Essex, MA 01929
(978) 768-3722, erba.com

Essex River Cruises & Charters
35 Dodge Street, Essex Marina,
Essex, MA 01929
(800) 748-3706, essexcruises.com

Newburyport Whale Watch LLC
54 Merrimack Street,
Newburyport, MA 01950
(800) 848-1111
newburyportwhalewatch.com

Schooner Thomas E. Lannon
63 R Rogers Street,
Gloucester, MA 01930
(978) 281-6634, schooner.org

WHERE TO EAT

Brackett's Ocean View Restaurant
25 Main Street, Rockport, MA 01966
(978) 546-2797, bracketts.com

CAPT's Waterfront Grill & Pub
94 Wharf Street, Pickering Wharf,
Salem, MA 01970
(978) 741-0555, captss.com

Century House
235 Andover Street,
Peabody, MA 01960
(978) 531-1410
centuryhousepeabody.com

Essex's N.Y. Deli & Pizza
1 Museum Place Mall, Suite 122,
Salem, MA 01970
(978) 741-1383

Finz Seafood & Grill
76 Wharf Street, Salem, MA 01970
(978) 744-8485, hipfinz.com

Giuseppe's Fresh Pasta - Fine Food, Inc.
257 Low Street,
Newburyport, MA 01950
(978) 465-2225
giuseppesfinefood.com

Gloucester House
Seven Seas Wharf, 63 Rogers Street,
Gloucester, MA 01930
(978) 283-1812
thegloucesterhouse.com

Latitude 43
25 Rogers Street,
Gloucester, MA 01930
(978) 281-0223, latfortythree.com

Legal Sea Foods, Inc.
Northshore Mall, Rtes 128 & 114,
Peabody, MA 01960
(978) 532-4500, legalseafoods.com

Michael's Harborside
One Tournament Wharf,
Newburyport, MA 01950
(978) 462-7785
michaelsharborside.com

Outback Steakhouse
300 Andover Street,
Peabody, MA 01960
(978) 532-4280, outback.com

Seaglass Restaurant
4 Ocean Front North,
Salisbury, MA 01952-2240
(978) 462-5800
seaglassoceanside.com

Sophia's
105 Essex Street, Salem, MA 01970
(978) 741-1809
sophias.homestead.com

Ten Center Street
10 Center Street,
Newburyport, MA 01950
(978) 462-6652, tencenterstreet.com

The Exchange at the Wenham Tea House
4 Monument Street,
Wenham, MA 01984
(978) 468-1398
wenhamteahouse.com

The Landing Restaurant
81 Front Street,
Marblehead, MA 01945
(781) 639-1266
thelandingrestaurant.com

The Lighthouse Preservation Society
61 ½ Water Street,
Newburyport, MA 01950
(800) 727-BEAM
lighthousepreservation.org

Victoria Station
Pickering Wharf, 86 Wharf Street,
Salem, MA 01970
(978) 745-3400
victoriastationsalem.com

Woodman's of Essex
121 Main Street, Rt. 133,
Essex, MA 01929
(800) 649-1773 / (978) 768-2559
woodmans.com

WHERE TO SHOP

Essex Merchants Group
44 Main Street, Essex, MA 01929
(978) 768-7039, visitessexma.com

Harbor Sweets
Palmer Cove, 85 Leavitt Street,
Salem, MA 01970
(978) 745-7648, harborsweets.com

Ipswich Shellfish Fish Market and Chrissi's Café
8 Hayward Street, Ipswich, MA 01938
(978) 356-6981, (888) 711-3060
ipswichfishmarket.com

Kensington-Stobart Gallery
Hawthorne Hotel, On the Common,
Salem, MA 01970
(978) 825-0022
kensingtonstobartgallery.com

Pickering Wharf
23 Congress Street, Salem, MA 01970
(978) 744-2727
pickeringwharf.com

Salt Marsh Antiques
224 Main Street, Rowley, MA 01969
(978) 948-7139
saltmarshantiques.com

The Loop
90 Pleasant Valley Street,
Methuen, MA 01844
(978) 946-9333
attheloop.com/methuen

The Trolley Depot
191 Essex Street, Salem, MA 01970
(978) 745-3003 trolleydepot.com

WHERE TO STAY (#OF GUEST ROOMS)

Cape Ann

Addison Choate Inn {8}
49 Broadway, Rockport, MA 01966
(978) 546-7543, addisonchoateinn.com

Atlantic Vacation Homes, Inc. {150 homes for rent}
115 Prospect Street,
Gloucester, MA 01930
(978) 283-4777
atlanticvacationhomes.com

Atlantis Oceanfront Inn {40}
125 Atlantic Road,
Gloucester, MA 01930
(978) 283-0014
atlantisocceanfrontinn.com

Cape Ann Motor Inn {31}
33 Rockport Road,
Gloucester, MA 01930
(800) 464-8439 / (978) 281-2900
capeannmotorinn.com

Cape Ann's Marina Resort & Spa {31}
75 Essex Avenue,
Gloucester, MA 01930
(800) 626-7660 / (978) 283-0806
capeannmarina.com

Emerson Inn by the Sea {36}
1 Cathedral Avenue,
Rockport, MA 01966
(800) 964-5550
emersoninnbythesea.com

Essex Conference Center and Retreat {20}
P.O. Box 949, Essex, MA 01929
(978) 768-7374, eccr.com

Harborview Inn of Gloucester {6}
71 Western Avenue,
Gloucester, MA 01930
(800) 299-6696, (978) 283-2277
harborviewinn.com

Linden Tree Inn {17}
26 King Street, Rockport, MA 01966
(800) 865-2122 / (978) 546-2494
lindentreeinn.com

Old Corner Inn {9}
2 Harbor Street,
Manchester, MA 01944
(800) 830-4996 / (978) 526-4996
theoldcornerinn.com

Pleasant Street Inn {8}
17 Pleasant Street,
Rockport, MA 01966
(978) 546-3915, pleasantstreetinn.net

Rockport Inn & Suites {79}
183 Main Street,
Rockport, Massachusetts 01966
(978) 546-3300
rockportinnandsuites.com

Sea Lion Motel & Cottages {25}
138 Eastern Avenue,
Gloucester, MA 01930
(978) 283-7300, sealionmotel.com

Sea Mist Cottage {1 unit}
57 Broadway, Rockport, MA 01966
(978) 546-6049 , seamistcottage57.com

Seaward Inn {17}
44 Marmion Way, Rockport, MA 01966
(978) 546-3471, seawardinn.com

Seven South Street Inn Bed & Breakfast {8}
7 South Street, Rockport, MA 01966
(888) 284-2730 / (978) 546-6708
sevensouthstreetinn.com

The Tuck Inn Bed & Breakfast {11}
17 High Street, Rockport, MA 01966
(800) 789-7260 / (978) 546-7260
tuckinn.com

Vista Motel, LLC {40}
22 Thatcher Road,
Gloucester, MA 01930
(978) 281-3410, vistamotel.com

Greater Boston

Fairfield Inn Boston Woburn
285 Mishawum Road,
Woburn, MA 01801
(781) 938-7575, marriott.com/woburn

Four Points Sheraton Boston Logan Airport {180}
407 Squire Road, Revere, MA 02151
(781) 284-7200
FourPoints.StarwoodHotels.com

Sheraton Colonial Boston North Hotel & Conference Center {280}
One Audubon Road,
Wakefield, MA 01880
(781) 245-9300
sheraton.com/colonial

Greater Newburyport

Arbor Inn Motel {9}
153 High Street, Ipswich, MA 01938
(978) 356-0220, arborinnmotel.com

Ashworth by the Sea {105}
295 Ocean Boulevard,
Hampton, NH 03842
(866) 981-5056 / (603) 967-4398
ashworthhotel.com

blue, The Inn On The Beach {15}
20 Fordham Way, Newbury, MA 01951
(978) 465-7171, blueinn.com

Compass Rose Inn {5}
5 1/2 Center Street,
Newburyport, MA 01950
(978) 423-5914
compassrosenewburyport.com

Country Garden Inn & Spa {24}
101 Main Street, Rowley, MA 01969
(978) 948-7773
countrygardeninnandspa.com

Essex Street Inn {37}
7 Essex Street, Newburyport, MA 01950
(978) 465-3148, essexstreetinn.com

Fairfield Inn Amesbury {105}
35 Clarks Road, Amesbury, MA 01913
(978) 388-3400, marriott.com/mhtfa

Inn at Castle Hill {10}
280 Argilla Road, Ipswich, MA 01938
(978) 412-2555, thetrustees.org

Greater Salem

Beverly Garden Suites {23}
5 Lakeview Avenue, Rt. 1A,
Beverly, MA 01915
(978) 922-7535
lakeviewmotorlodge.com

Boston Marriott Peabody {256}
8A Centennial Drive,
Peabody, MA 01960
(978) 977-9700, marriott.com

Cap'n Jack's Waterfront Inn {24}
253 Humphrey Street,
Swampscott, MA 01907
(781) 595-7910, capnjacks.com

Clipper Ship Inn {45}
40 Bridge Street, Salem, MA 01970
(978) 745-8022, clippershipinn.com

Comfort Inn - North Shore {140}
50 Dayton Street, Danvers, MA 01923
(978) 777-1700, comfortinn.com

Courtyard by Marriott Danvers {121}
275 Independence Way,
Danvers, MA 01923
(888) 686-5064, (978) 777-8630
marriott.com

Crowne Plaza Boston North Shore {366}
50 Ferncroft Road, Danvers, MA 01923
(978) 777-2500, cpbostonns.com

Days Inn {129}
152 Endicott Street, Danvers, MA 01923
(978) 777-1030, daysinn.com

Hampton Inn Boston-Peabody {120}
59 Newbury Street, Peabody, MA 01960
(978) 536-2020
hamptoninn.hilton.com

Harbor Light Inn {21}
58 Washington Street,
Marblehead, MA 01945
(781) 631-2186, harborlightinn.com

Hawthorne Hotel {93}
On the Common, Salem, MA 01970
(978) 744-4080, hawthornehotel.com

Holiday Inn & Suites Boston Peabody {183}
1 Newbury Street, Peabody, MA 01960
(978) 535-4600, holidayinn.com

Homewood Suites by Hilton {85}
57 Newbury Street, Peabody, MA 01960
(978) 536-5050
homewoodsuites1.hilton.com

Salem Waterfront Hotel & Suites {86}
225 Derby Street, Salem, MA 01970
(978) 740-8788
salemwaterfronthotel.com

SpringHill Suites by Marriott {164}
43 Newbury Street, Peabody, MA 01960
(978) 535-5000, springhillsuites.com

The Salem Inn {40}
7 Summer Street, Salem, MA 01970
(978) 741-0680, saleminnma.com

The Wylie Inn & Conference Center {92}
295 Hale Street, Beverly, MA 01915
(866) 333-0859, wyliecenter.com

Merrimack Valley

Andover Inn {30}
4 Chapel Avenue, Andover, MA 01810
(978) 775-4900, acc-andoverinn.com

Best Western Merrimack Valley {126}
401 Lowell Avenue,
Haverhill, MA 01832
(978) 373-1511, bestwestern.com

Boston Andover Homewood Suites by Hilton {82}
4 Riverside Drive, Andover, MA 01810
(978) 475-6000
homewoodsuites1.hilton.com

Comfort Suites Haverhill {131}
106 Bank Road, Haverhill, MA 01832
(978) 374-7755
comfortsuireshaverhill.com

Fairfield Inn Boston Tewksbury/ Andover {133}
1695 Andover Street,
Tewksbury, MA 01876
(978) 640-0700, fairfieldinn.com

Holiday Inn Express {126}
224 Winthrop Avenue,
Lawrence, MA 01843
(978) 975-4050, hiexpress.com

Staybridge Suites Boston-Andover {133}
4 Tech Drive, Andover, MA 01810
(978) 686-2000, staybridgesuites.com

Wyndham Boston Andover
123 Old River Road, Andover, MA 01810
(978) 975-3600
wyndham.com/hotels/BOSAM





The Insider's Guide to Culture North of Boston

As the birthplace of artistic luminaries and home to historic events that shaped the nation, the North of Boston region has something for every culturally curious visitor. Walk in the footsteps of renowned American artists, authors, and architects and experience the spectacular natural vistas, bustling seaports, and hospitable small towns that have given the region its unique spirit for centuries.

ESCAPESNORTH.COM has suggested itineraries, a list of festivals and events, special getaway packages and trails to help you with your travel planning.

photo credits: Leslie Bartlett, Jeremy Barnard, John Greenleaf Whittier Home, Judy Robinson-Cox



The Artists of Essex County

Discover the rocky coastlines, sandy beaches, sweeping marshlands, and lush forests that drew artists such as Winslow Homer and Edward Hopper to the North of Boston region. Share their experiences and enjoy their work on display at museums, historic sites, and galleries throughout the area.



Festivals and Celebrations

From religious holidays and ethnic events to small town parades, autumn harvest and maritime celebrations, festivals are a way to honor our heritage and communities. Plan your visit around one of these free events to get real sense of the community North of Boston.

The Performing Arts

You'll encounter an astonishing variety of venues just minutes north of Boston where outstanding theatre, music, and dance can be seen and enjoyed in relaxed settings at affordable prices.



Distinctly American Voices

The Authors of Essex County captured the enduring American Spirit in their stories of revolutions and inventions, witches and whales, early settlers who braved the unknown for a better life and of fishermen lost at sea. Visit the homes of literary giants, see statues erected in their honor and read original editions of their works housed in the region's museums, historical societies, and libraries.



The Birthplace of American Architecture

A journey through Essex County puts visitors in touch with more than three centuries of American architecture.

Join us on the first Saturday of the month, June through October, for 17th Century Saturdays. First Period of European settlement properties (1625-1725) throughout the area will be open to the public, many offering special programming and tours.

Maritime Harvest: A Seafood Diner's Delight

The maritime heritage of Essex County is renowned. From Gloucester, the oldest working seaport in the Country to Lowell's Boat Shop in Amesbury which is the Country's oldest continuously operated boat shop. You will find lighthouses, fishermen unloading their catch, bustling ports, many opportunities to paddle, fish, sail and be on the water, 18th century captain's homes, museums that chronicle the maritime trade and hands on exhibits explaining the fishing industry.



While exploring the region we believe the best way to capture the maritime spirit of the region is to partake in the harvest! From boiled red lobster and farm fresh corn to a plate of fried clams we have the quintessential New England experience ready for you to enjoy.

Download the NBCVB's Seafood Trail App for what to see and do and where to eat North of Boston.

This cultural tourism program is led by the North of Boston Convention & Visitors Bureau, the Peabody Essex Museum, and Historic New England with support from the Massachusetts Cultural Council.

A waterfront that will keep you coming back.

You'll find it all in beautiful Newburyport's historical seaport setting where the quintessential New England experience is world class.

SHOPPING

Newburyport is a shopper's paradise where a diverse mix of stores, shops, boutiques and galleries line the city's historic streets. More than 50 premier retail locations can be found throughout the picturesque downtown area with a diverse offering.
www.newburyportdevelopment.com

DINING & CATERING

<h4>Ten Center</h4> <p>Newburyport's historic and hip dining address blending New American cuisine with French flair. www.tencenterstreet.com</p>	<h4>Michael's Harborside</h4> <p>Newburyport's premier waterfront restaurant. Enjoy seafood specialties and the best outdoor dining. www.michaelsharborside.com</p>
<h4>Harborside Catering</h4> <p>Creating unique presentations of personalized menus for both elegant and casual celebrations. Harborside Catering can provide just the venue for your special occasion. www.harborsidecatering.com</p>	

MARINAS

One of New England's most sought-after boating destinations, the Newburyport Marinas offer exceptional amenities and quick, easy access to the Atlantic Ocean.

**Newburyport Harbor Marina | Hilton's Marina
Windward Yacht Yard | Newburyport Boat Basin**
www.newburyportmarinas.com

WHALE WATCH CRUISES

Newburyport Whale Watch

Exciting adventures and local attractions offer fun for the whole family. Be whisked out to sea on a Prince of Whales cruise.
www.newburyportwhalewatch.com

newburyportdevelopment.com

Journey through a world of art and culture

Don't miss the famous Peabody Essex Museum



The wealth and power of historic Salem is showcased in PEM's unrivaled collection of art and culture from New England and around the globe. Come explore the city's international connections through extraordinary works of art from China, India, Japan and beyond, including a 200-year-old Chinese house. Plus, special exhibitions and events, and an interactive center for families.

Simplify your travel planning. Visit www.escapesnorth.com for travel information, regional itineraries and hotel packages.

PEEM

Peabody Essex Museum

161 Essex Street | Salem, Massachusetts 01970 | 978-745-9500 | pem.org
Open 10 am – 5 pm | Tuesday – Sunday and holiday Mondays